

# RED ALLIANCE

redalliance.biz

Join us  
in person or online!



21<sup>st</sup> Annual  
**SPRING  
PRODUCTION SALE**  
**Thursday, March 9, 2023**

Sale starts at 12:00 p.m.

Groesbeck Auction & Livestock · Groesbeck, Texas

Conveniently located 25 miles west of Buffalo, Texas, and I-45

LOCATED IN  
CENTRAL TEXAS!



## Featuring

**27 Registered  
Red Angus Bulls**

*All are age-advantaged bulls –  
18 months or older*

**7 Registered Red Angus  
Open Heifers**

**Elite Embryo Packages**

**He sells as Lot 6!** Offering four full brothers by virtue of embryo transfer. They are sired by the powerful HXC Syndicate 5013, a Beckton Nebula son that has been a high performer. The dam to these bulls derived from Badlands Net Worth and the \$30,000-valued donor cow, LSF Mattie (Reg. #80214908), who has been one of the breed's top-performing cows for years. EPDs on these four full sibs will be in the Top 30% or better for the breed on 12 or more EPD traits. All four of these bulls are seedstock quality. Phenotypically attractive!

**[www.redalliance.biz](http://www.redalliance.biz)**

check often for updates, photos and videos



Follow us  
on Facebook

# Welcome!

Whew! We are glad that is over – or is it? The drought of 2022-2023 tested the mettle and resolve of every rancher in the Central Plains states. The experienced, toughest and, in some cases, the luckiest found a way to manage through the conditions we faced. Those who simply had no choice had to make tough decisions that wrecked or at least partially wrecked years of hard work and careful management. Lack of grass and hay, high hay prices and, for many, a lack of surface water made our herd decisions by default.

As of the writing for this message, the U.S. beef cow herd is expected to have declined by approximately 4%. Calf prices are rising and many prognosticators believe that \$3 calves will be a common trend in the Southern Plains states. For those who have been fortunate enough to survive what mother nature dealt us, it looks like there is going to be a pay day.

This type of market demands that you have bulls ready to work. Sometimes, the commercial cattleman will try to stretch their herd bulls "one more season." Then we receive that urgent call looking for a bull because "ol' Charlie" has not passed his fertility test, has become injured or cows continue to cycle regularly, indicating that Charlie has run out of gas. We are offering a great set of age-advantaged virgin bulls that are eagerly looking for a job. They are fertility and trich tested, healthy, have good dispositions, and are in great condition with a long career in front of them. Perhaps the most important factor is that they were raised here in Texas under the harshest conditions that they will ever face – not only did they survive but they also thrived. Nothing can substitute that experience.

There is a small group of registered heifers available on sale day for breeders looking to add a piece or two to their herd. We believe that you will appreciate the selection.

Our longtime friend and one of the founding members of the Red Alliance, Kyle Gilchrist, will be our auctioneer for the sale this spring. We are glad to have him back. With that said, we want to tip our hat to Jeff Brown who has been our auctioneer the past couple of years and very likely will carry the torch for us in some future sales. The change from Jeff to Kyle is all about 30 years of friendship with Kyle. Both are great auctioneers!

## The Red Alliance Team

### Sale Day Phones

Brian Whisnand • 214-762-8541

Randy Wickman • 972-658-6523

Eric Durbin • 214-287-6442

Randy Pittman • 903-814-1836

Brady Allen • 254-433-6900

Catalog will be posted and available for your review digitally online at [www.redalliance.biz](http://www.redalliance.biz) and [www.CCI.Live](http://www.CCI.Live)

*Hard copies of catalogs will only be available on sale day in Groesbeck. Inconsistency of bulk mail delivery by the U.S. Postal Service has led us to this decision. Our customers have grown comfortable with this method and we appreciate the acceptance. If you prefer to have a copy of the catalog emailed to you please call or text any member of our team with your email address.*

## Sale is centrally located!

### Driving distance to Groesbeck, Texas

Dallas – 96 miles – 1 hour, 30 minutes

Houston – 160 miles – 2 hours, 20 minutes

Austin – 136 miles – 2 hours

San Antonio – 215 miles – 3 hours, 15 minutes

Durant, Okla. – 189 miles – 3 hours

Shreveport, La. – 198 miles – 3 hours, 20 minutes



### Groesbeck Auction & Livestock

1401 TX-164  
Groesbeck, TX 76642

Phone: 254-729-3277

*For more information on our sale facility, please see page 3.*



# RED ALLIANCE

## 21<sup>st</sup> Annual SPRING PRODUCTION SALE

Thursday, March 9, 2023

Sale starts at 12:00 p.m.

Groesbeck Auction & Livestock • Groesbeck, Texas

### Featuring

**27 Registered, Range-Ready Red Angus Bulls**

*Age-advantaged bulls, 18 months or older*

**7 Registered Red Angus Open Heifers • Elite Embryo Packages**

### Schedule of Events

**Tuesday, March 7**

Bulls available for viewing

**Wednesday, March 8**

Registered females arrive for viewing.

**Thursday, March 9**

**8:00 a.m.** All cattle available for viewing.

**12:00 p.m.** Sale begins, leading off with the bulls followed by registered females

*Please note that Thursday, March 9, is the normal sale date for Groesbeck Auction and Livestock. Come early to view the bulls and get a good seat. The Red Angus cattle sell first!*

#### Auctioneer

Kyle Gilchrist • 641-919-1077  
Texas Auctioneer License #11273

#### Buyer Representatives/Ringmen

Ralph Means • *Weekly Livestock Reporter* • 817-235-9708  
Greg Goodrum • *Gulf Coast Cattleman* • 903-388-2544

#### Hotels

There are a variety of hotels in Groesbeck. We recommend the Lone Star Inn & Suites at 254-729-3335. We also recommend Comfort Inn & Suites in Mexia, which is a short drive away from Groesbeck. Their number is 254-562-0005.

#### Delivery Information

We offer free delivery of bulls for purchases exceeding \$7,500 within a 100 mile radius of Groesbeck. Contact Brian Whisnand in advance of the sale if you have delivery requests or questions. All female purchases are the buyer's responsibility. We can assist in arranging trucking at buyer's expense.

#### Insurance

Martin-Trudeau Insurance: 605-996-3106 or 800-450-3106  
Ray Trudeau: 605-770-5170 • Randa Dean: 605-999-3995

#### Sight Unseen Purchase Guarantee

Buyers unable to attend the sale may call Brian Whisnand or a Buyer Representative. We guarantee complete satisfaction for all cattle purchased in this manner.

#### Breeding Guarantee

All Red Angus bulls are guaranteed for their first full breeding season following this sale. This guarantee does not cover mortality or injury and we encourage buyers to consider buying an insurance policy. All bulls covered by our guarantee will require that we retain salvage value for the bull. Any bull kept for 30 days immediately following the sale will incur a \$1,000 "breeding use" fee to be applied to any settlement reached with the buyer. Any bulls returned to Red Alliance for non-performance will require a vet statement. The Texas Animal Health Commission requires a trichomoniasis test for bulls prior to being transported back to a Red Alliance member's ranch. Our guarantee does not cover injuries. We urge all buyers to carefully introduce new cattle into your existing herds with an abundance of caution. Most injuries to bulls are from fighting with other bulls, resulting in injuries to legs or testicles. Injuries can occur with females as well. All bulls returned for a guarantee claim must be returned to a member's ranch within 14 days of submitting a claim. The guarantee will provide for a replacement bull of equal quality and value or a purchase credit to be used in future Red Alliance auctions.

#### Fertility Testing/Health

Every bull has been fertility tested and has passed a breeding soundness exam. In addition, each bull has been tested for BVD-PI and vaccinated according to strict protocols required by Red Alliance. Testing for trichomoniasis is performed as required in accordance with Texas Animal Health Commission rules and regulations.

# RED ALLIANCE

Check out our website at

[redalliance.biz](http://redalliance.biz)

Follow us on 

## The Red Alliance Program

The Red Alliance program is built in the same manner as large ranches that utilize Cooperator Herd systems, the only exception being that each of our producers retain their ranch identity (Herd Prefix tattoo). We do not add a master prefix before the cooperator's prefix. Our members strongly subscribe to the use of artificial insemination, embryo transfer and outstanding herd sires in order to stay on the leading edge of genetic opportunities for our customers. It is the same general philosophy employed by all of the top breeder programs in the U.S., Red Alliance bulls are screened and evaluated multiple times – non-performers are eliminated. We develop the best bulls possible to maximize your profitability!

## The Red Alliance Team

*Below is our team of professional Red Angus bull and female producers.*

*If you have any questions regarding Red Angus cattle in the auction, feel free to give these folks a call.*

### Flash Ranch

Brady Allen  
Rising Star, Texas  
254-433-6900  
[brady.allen@flashranchllc.com](mailto:brady.allen@flashranchllc.com)

### Pittman Red Angus

Randy Pittman  
Bells, Texas  
903-814-1836  
[drpittman57@gmail.com](mailto:drpittman57@gmail.com)

### Steel Caps Cattle Company

Eric Durbin & Suzanne Appolito-Durbin  
Clarksville, Texas  
214-287-6442  
[edurbin@steelcaps.net](mailto:edurbin@steelcaps.net)  
[www.steelcaps.net](http://www.steelcaps.net)

### Whisnand Red Angus

Brian & Karen Whisnand  
Whitewright, Texas  
214-762-8541  
[brianwhisnand@gmail.com](mailto:brianwhisnand@gmail.com)  
[www.whisnandredangus.com](http://www.whisnandredangus.com)

### Wickman Farms Red Angus

Randy & Ronda Wickman  
Dr. Terrance & Diana Wickman  
Leonard, Texas  
972-658-6523  
[randywickman1@gmail.com](mailto:randywickman1@gmail.com)

## Special Guests – Embryo Offering

### Bootjack Cattle Company

Paul Haugen  
Lewistown, MT  
406-366-2855  
[bootjack@midrivers.com](mailto:bootjack@midrivers.com)

### Rhodes Red Angus

Darryl & Susan Rhodes  
Maize, KS  
316-722-6900  
[rhodesredangus2@gmail.com](mailto:rhodesredangus2@gmail.com)

## Groesbeck Auction & Livestock Facility

We love this sale facility. The people are great, the location is in the heart of Texas and it has an excellent restaurant on location. It is without question one of the cleanest and well-maintained facilities we have ever seen. We want to thank Stephen Bradley and other owners of this facility for welcoming us to their fine establishment.

One aspect of their sale facility that we absolutely love is that the seating area is large. With all of the concerns about social distancing, the ample seating area is ideal. The large seating area, combined with online bidding through CCI Live, will make our sale very safe for everyone to attend, whether it is in person or virtually. Folks, you will be very impressed and pleased with this facility!



## Catalog Design

Blueprint Media • [blueprintma.com](http://blueprintma.com)

MARTIN-TRUDEAU INSURANCE  
**LIVESTOCK DIVISION**

**LIVESTOCK:**

- Mortality
- Fertility
- Prospective Offspring (Pregnancy)
- Packers & Stockyards (Mortgage & Stolen Cattle)
- Feed Yards

**EQUINE:**

- Mortality
- Major Medical/Surgical Options
- Stallion Intestitis (ASD)
- Prospective Foal
- Private Horse Owner's Liability Endorsement

Frozen Semen & Embryo/Storage & Transit

**We proudly represent the following companies:**  
AXA XL, Liberty Mutual, Stockmen's Insurance, Nationwide,  
Chubb Agribusiness, Grinnell Mutual, Berkley Equine & Cattle

COLIN TEHR • RANDI DEAN • KATIE WILLIAMS • RAY TENDLER • CHRISTOPHER NEUMAN • KARY BRADSHAW

Livestock Insurance endorsed by the SD Angus Association, SD Stockmen's Association & SD Hereford Association

1531 W Elm Ave • P.O. Box 402  
Mitchell, SD 57301

605-996-3106  
1-800-450-3106

**MARTIN-TRUDEAU INSURANCE**

[WWW.MARTIN-TRUDEAUINSURANCE.COM](http://WWW.MARTIN-TRUDEAUINSURANCE.COM)

**Trusted Choice**  
Member Since 2008



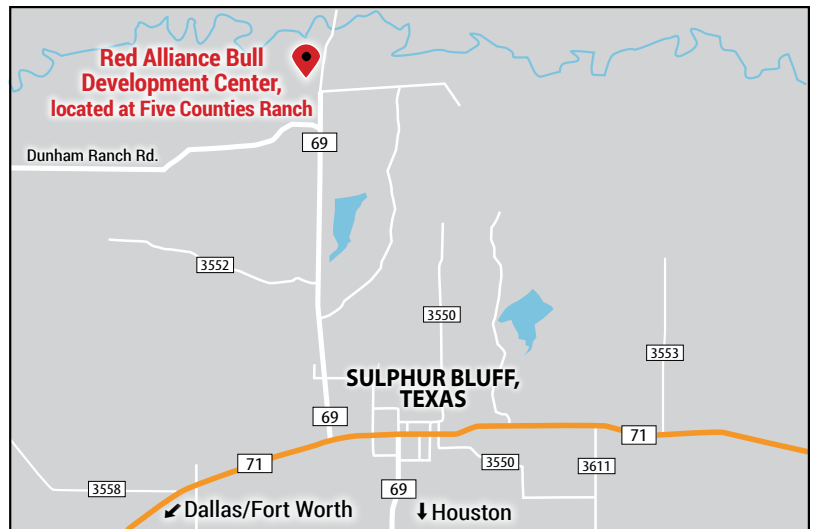
## Red Alliance Bull Development Center

We take great pride in our bull development. We also greatly appreciate Five Counties Ranch for their facilities, pastures and bull development program. Bull development is led by Keith Ogren and his team. They do an absolutely wonderful job. He is supported administratively by Cortney Young, who is equally important to our team. We could not be happier with the service and quality of care they provide.

One aspect that we appreciate and that our customers value considerably is that the way our bulls are handled creates calm demeanors. Year in and year out, the disposition of our bulls starts at home but is further defined by Keith and his team. We cannot thank them enough. Our bulls are developed in large grass pastures on high-quality Bermuda grass or hay, minerals and supplemented gradually at 1.5% of their body weight with a textured feed ration developed by LNC's professional nutritionists. They grow, with an emphasis on growing, not fattening. No bulk feeders. We want to deliver bulls to our customers in a body condition that fully expresses their genetic potential but, most important, ensures they're ready to hit your pastures in an athletic condition.

Many bull developers are feeding hundreds of bulls in a muddy feedlot with forage supplemented through the feed ration. Most of them push for high average daily gains (ADG) with some reaching 4+ lbs. per day in order to reach high yearling weights. Bull development has a completely different end result than feeding a group of steers intended for maximum gain to reach kill weights as quickly as possible. As a result, their bulls get overfed, develop soft feet and do not have the stamina to WORK due to lack of exercise. You will not find that to be the case with our bulls.

We encourage you to go to our website and read two very fine articles posted for your viewing. The first one is a white paper written by the experts at the Red Angus Association. It is titled, rightfully so, "Why all the Fat Bulls?" It is a 12-page document and, since it is written by an objective third party, you can appreciate the unbiased view of experts. The document is well worth the time it takes to read. In addition, you will find a separate document written by Heather Smith Thomas titled "Feeding and Managing Young Bulls." We subscribe to their recommendations.



**redalliance.biz**

Aim your cell phone camera at this QR code to automatically take you to our website and these articles!



## Watch the Sale on CCI.live!

The best, the fastest and most comprehensive marketing & bidding tool!

### How to Bid Online...

- As a buyer, you DO NOT need to login to watch the sale but you must have a validated account to bid.
- To BID ONLINE go to [www.CCI.live](http://www.CCI.live) in your Chrome, Firefox, Safari or other modern browser:
  - 1) Click on the sale schedule page.
  - 2) Click on the sale of interest.
  - 3) Click on Bid Online- Register and then Get Buyer Number
- After you are logged in, you must proceed to the sale page for your auction and click Bid Online - Register, then "Get Buyer Number." Some auctions require valid credit card number on file to obtain a buyer number to bid.
- CCI.live will operate with ease on a modern cellular device, laptop, desktop or tablet.
  - A current browser is important and will always make your experience better.
- For successful bidding you must have good Internet service! It is very important to be stationary if bidding. If you are driving and bidding, expect to have some service issues. If you are stationary on a good device, with healthy Internet, expect a very successful bidding environment. If you have slow Internet watch the "asking price" on the screen, it is real time, and refresh your browser if you feel like you have some lag.
- Support line open during all sales. TEXT 405-400-9505 - Please alert the ranch for your hauling preferences.

# Red Angus Guide to EPDS and Indexes

**ProS...** Profitability and Sustainability is an all-purpose index that predicts average economic differences in all segments in the beef supply chain. This index is a combination of the breeding objectives modeled in the HerdBuilder and GridMaster selection indexes. In this index, replacement heifers are retained from within the herd and all remaining progeny are fed out to slaughter and sold on a quality-based grid. Traits included in this index include calving ease, growth, HPG, STAY, Mature Weight, Dry Matter Intake and carcass traits. The resulting index is expressed in dollars per head born (Index/High Value).

**HB .....** HerdBuilder is a maternal selection index that predicts the economic differences of animals for traits that are important from conception through weaning. Expressed as dollars per head born, HB is calculated based on the scenario that bulls are mated to heifers and cows, replacement heifers are retained and all remaining progeny are marketed at weaning. Traits included in the HB index include Calving Ease Direct, Calving Ease Maternal, Weaning Weight, Milk, Mature Weight, Heifer Pregnancy and Stayability (Index/High Value).

**GM.....** GridMaster is a selection index that predicts the average economic difference of non-replacement calves through the post-weaning phase of production. GM places selection pressure on growth, feedyard performance and carcass traits. Expressed as dollars per head born, GM is calculated based on the scenario that progeny are fed out to slaughter and marketed on a quality-based carcass grid. Traits included in GM include Average Daily Gain, Carcass Weight, Dry Matter Intake, Marbling, Back Fat and Rib Eye Area (Index/High Value).

**CED .....** Calving Ease Direct predicts differences in the percent of calves born unassisted out of 2-year-old dams. (Percent/High Value)

**BW .....** Birth Weight predicts differences in actual birth weight of progeny. (Pounds/Low Value)

**WW .....** Weaning Weight predicts differences in 205-day weaning weight. (Pounds/High Value)

**YW .....** Yearling Weight predicts differences in 365-day yearling weight. (Pounds/High Value)

**ADG .....** Average Daily Gain predicts differences in weight gain between 205 and 365 days of age. (Pounds/High Value)

**DMI .....** Dry Matter Intake predicts differences in daily feed intake as measured in a feedlot during the post-weaning period. (Pounds/Low Value)

**MILK .....** Milk predicts differences in weaning weight attributed to the milking ability of the animal's daughters. (Pounds/High Value)

**ME .....** Maintenance Energy predicts the difference in maintenance energy requirements. (Mcal per Month/Low Value)

**HPG .....** Heifer Pregnancy predicts differences in the percent of daughters who are able to conceive and calve at 2 years of age following exposure to breeding. (Percent/High Value)

**CEM .....** Calving Ease Maternal predicts differences in the percent of daughters who are able to calve unassisted as 2-year-old heifers. (Percent/High Value)

**STAY .....** Stayability predicts differences in the ability of an animals' retained daughters to remain productive in the herd – calve every year – through 6 years of age. (Percent/High Value)

**MARB .....** Marbling predicts differences in marbling score – amount of intramuscular fat measured at the 13th rib. (Marbling Score Units/High Value)

**YG .....** Yield Grade predicts differences in USDA Yield Grade, which is calculated using CW, REA and Fat. (Yield Grade Units/Low Value)

**CW .....** Carcass Weight predicts differences in actual hot carcass weight. (Pounds/High Value)

**REA .....** Ribeye Area predicts differences in square inches of ribeye area measured at the 13th rib. (Square Inches/High Value)

**FAT .....** Fat predicts differences in the depth of backfat measured between the 12th and 13th ribs. (Inches/Low Value)

**RED ANGUS**  
RANCH TESTED. RANCHER TRUSTED.  
[RedAngus.org](http://RedAngus.org)





# 2-YEAR-OLD RED ANGUS BULLS

We are leading off with two bulls that are 2-year-olds and will have the capacity to cover additional cows. These are virgin bulls. Buy them with confidence.



# 1

## 77AUS FLASH CAN DO J739

Bull Reg. #4417169 Tattoo: J739 DOB: 3/14/2021 A-100% AR

BW	BR	WW	WR	YW	YR
75	103	650		885	

BUF CRK THE RIGHT KIND U199  
**WW RIGHT TYPE 71013**  
 LONK BIRDIE T767

SMOKY Y CHAVEZ 7124E  
**3JF MS LOUNA G409**  
 3J MS KATY Z112

BUF CRK LANCER R017  
 BUF CRK SHOSHONE R353  
 5L DIRECTOR 703-5275  
 JAF SHOSHONI J986

FEDDES OSCAR X28  
 RED WINDY HILL BELLE 1107Y  
 BADLANDSPFFRBEEFMAKER638  
 ROBBIE SUE

ProS	HB	GM
69	39	30

CED	BW	WW	YW	ADG	DMI	Milk	ME	HPG	CEM	STAY	Marb	YG	CW	REA	FAT
13	-1.1	57	91	0.21	1.4	27	6	11	8	13	0.41	0	14	0.1	0.01

- Commercial cattleman's type of bull – solid, well proven pedigree.
- Sired by a previous high seller through the Red Alliance program.
- Weaned at 650 lbs.
- Medium frame with attractive phenotype.
- Excellent disposition.



**2**

## RETW 131 DUKE'S ARROW

**Bull** Reg. #4482449 Tattoo: 131 DOB: 3/1/2021 A-100% AR

BW	BR	WW	WR	YW	YR
66	96	447		1065	

BECKTON NEBULA P P707  
**HXC SYNDICATE P707 5013C**  
 HXC 502R

3J DUKE Z335  
**W LANCER'S ARROW**  
 RETW III ION

BECKTON NEBULA M045  
 BECKTON LANA M809 EP  
 BECKTON JULIAN GG B571  
 HXC JAYLO LB136  
 BECKTON LANCER F442 T  
 LSF MATTIE 8021 4908  
 BIEBER TOP ARROW 7793  
 HEATHER ANNE 898

ProS	HB	GM
108	56	53

CED	BW	WW	YW	ADG	DMI	Milk	ME	HPG	CEM	STAY	Marb	YG	CW	REA	FAT
13	-1.7	60	96	0.22	1.12	27	4	10	6	17	0.52	0.01	22	0.26	0.01

- Power and growth bull with a large frame.
- His sire, HXC Syndicate, was a powerfully built bull that was perfect for adding pounds to his calves. See his reference sire photo. 131 has four half-brothers that sell as Lots 5-8 if you are looking to increase uniformity into your calf crop.
- 131 ranks in the Top 25% for the ProS and GridMaster Index rankings
- Despite his growth traits his actual performance and EPDs indicate that he has calving ease traits with a 66-lb. BW, -1.3 BW EPD and a 13 CED.

*Note: This bull is 100% Red Angus but is a Category II registration due to excessive white on his underline and in front of his navel.*

**RED ALLIANCE**

PHOTOS AND VIDEOS  
 WILL BE POSTED ONLINE AT

[www.redalliance.biz](http://www.redalliance.biz)



# AGE-ADVANTAGED RED ANGUS BULLS

Our bulls are developed in environments that are the same as what they will experience in your pastures: hot, dry summers, cold winters, wind-driven rain, sleet, ice and all on grass pastures. Just like what you have on your ranches. Our photos represent clipped heads, tails and sheaths; they are in their working clothes. They were not developed in a feedlot pen like steers going to a packer. All photos in this catalog were taken in December, so their progression since that time will be better reflected in our videos that will be posted online at [www.redalliance.biz](http://www.redalliance.biz) and at [www.CCI.Live](http://www.CCI.Live). The sire groups represented are excellent.



## 3

### RETW J34

Bull	Reg. #4654569		Tattoo: J34		DOB: 9/29/2021		A-100% AR	
	BW	BR	WW	WR	YW	YR		
	66	95	605					

PIE FULLBACK 7005  
**PIE FULLBACK 9135**  
 PIE CENTENNIAL 6053

3J DUKE Z335  
**WF GLACIER**  
 ROLL BEE

PIE CINCH 4126  
 PIE MS PATRIOT 536  
 ANDRAS NEW DIRECTION R240  
 PIE CENTENNIAL 4356  
 BECKTON LANCER F442 T  
 LSF MATTIE 8021 4908  
 GLACIER CHATEAU 744  
 FFR 4 TIMES SUNSHINE

ProS	HB	GM
87	58	29

CED	BW	WW	YW	ADG	DMI	Milk	ME	HPG	CEM	STAY	Marb	YG	CW	REA	FAT
11	-1.8	57	94	0.23	1.28	27	2	11	6	16	0.25	0.04	21	0.11	0.01

- J34's sire, PIE Fullback 9135, has been an excellent producer in our program and a hard-working hustler in the pastures. We have a reference sire photo later in the catalog.
- Very attractive phenotype. This bull rose to the top in our development program.
- Will arrive on sale day weighing in the neighborhood of 1,500 lbs. and in excellent condition.
- Note his 66-lb. actual birthweight and -1.8 BW EPD and then exploded in growth.

## 4

### RETW 1225 FRANCHISE

Bull							Reg. #4485009		Tattoo: 1225		DOB: 2/25/2021		A-100% AR	
BW		BR		WW		WR		YW		YR				
64		100		538		87		1046						

9 MILE FRANCHISE 6305  
**PIE FRANCHISE 952**  
 BIEBER TILLY 399W

GILCHRIST HIGH ENDURANCE  
**WF MISS BEE**  
 ROLL BEE

SPUR FRANCHISE OF GARTON  
 C-BAR ABIGRAVE Y11  
 BIEBER BOONE 8000  
 BIEBER TILLY 303S

SCHULER ENDURANCE 2101Z  
 BIEBER YOD 340X  
 GLACIER CHATEAU 744  
 FFR 4 TIMES SUNSHINE

ProS	HB	GM
92	57	35

CED	BW	WW	YW	ADG	DMI	Milk	ME	HPG	CEM	STAY	Marb	YG	CW	REA	FAT
12	-2.3	58	100	0.26	1.65	28	3	11	9	15	0.32	0.03	23	0.23	0.02

- Very popular bull with pre-sale visitors due to his attractive profile.
- Has low birthweight traits with a 71-lb. actual BW and a -2.3 BW EPD.
- Very well-balanced set of EPDs across the board without extremes in many traits.
- Muscular build, moves very freely, well conditioned, ready for immediate work.
- Study his video closely before you arrive on sale day. He will likely be one of the most popular bulls on March 9.

## LOTS 5, 6, 7 & 8

These four full brothers are the result of our embryo transfer program and feature the progeny of HXC Syndicate 5013, a Beckton Nebula P707 son, and a powerfully built donor dam that was sired by the highly regarded Badlands Net Worth and out of the \$30,000-valued LSF Mattie 8021 that has proven herself many times. We believe this group has seedstock quality herd sire potential not only in their phenotype but also in their EPD profiles as well as the unquestioned quality in their pedigrees. It was difficult to set them into the sale order. Buyers will determine their respective rankings.

These are power, growth and carcass-quality bulls. They will have no fewer than 12 EPDs in the top third of the breed with at least five of those traits in the Top 20% or higher.

If you are a seedstock producer, take a close look at this group!



# 5

## WW J14E

**Bull** Reg. #4701719 Tattoo: J14E DOB: 10/15/2021 A-100% AR

BW	BR	WW	WR	YW	YR
75		613		1158	

BECKTON NEBULA P P707  
**HXC SYNDICATE P707 5013C**  
HXC 502R

BADLANDS NET WORTH 23U  
**3J MS ARIANNA Y4908**  
LSF MATTIE 8021 4908

BECKTON NEBULA M045  
BECKTON LANA M809 EP  
BECKTON JULIAN GG B571  
HXC JAYLO LB136

PFFR SHAQ 607  
BADLANDS MEDORA 406  
LCC NEW CHAPTER A705L  
DGR MATTIE 8021

ProS	HB	GM
116	71	45

CED	BW	WW	YW	ADG	DMI	Milk	ME	HPG	CEM	STAY	Marb	YG	CW	REA	FAT
8	0.8	69	112	0.26	1.74	26	5	13	5	19	0.53	0	24	0.23	0.01

# 6

## WW J17E

**Bull** Reg. #4701725 Tattoo: J17E DOB: 10/14/2021 A-100% AR

BW	BR	WW	WR	YW	YR
71		596		1164	

BECKTON NEBULA P P707  
**HXC SYNDICATE P707 5013C**  
HXC 502R

BADLANDS NET WORTH 23U  
**3J MS ARIANNA Y4908**  
LSF MATTIE 8021 4908

BECKTON NEBULA M045  
BECKTON LANA M809 EP  
BECKTON JULIAN GG B571  
HXC JAYLO LB136

PFFR SHAQ 607  
BADLANDS MEDORA 406  
LCC NEW CHAPTER A705L  
DGR MATTIE 8021

ProS	HB	GM
116	71	45

CED	BW	WW	YW	ADG	DMI	Milk	ME	HPG	CEM	STAY	Marb	YG	CW	REA	FAT
8	0.8	69	112	0.26	1.74	26	5	13	5	19	0.53	0	24	0.23	0.01

*Note: See his photo on the front cover!*





**7**

**WW J16E**

Bull Reg. #4701723 Tattoo: J16E DOB: 10/14/2021 A-100% AR

BW	BR	WW	WR	YW	YR
74		587		1132	

BECKTON NEBULA P P707  
**HXC SYNDICATE P707 5013C**  
 HXC 502R

BECKTON NEBULA M045  
 BECKTON LANA M809 EP  
 BECKTON JULIAN GG B571  
 HXC JAYLO LB136

BADLANDS NET WORTH 23U  
**3J MS ARIANNA Y4908**  
 LSF MATTIE 8021 4908

PFFR SHAQ 607  
 BADLANDS MEDORA 406  
 LCC NEW CHAPTER A705L  
 DGR MATTIE 8021

ProS	HB	GM
116	71	45

CED	BW	WW	YW	ADG	DMI	Milk	ME	HPG	CEM	STAY	Marb	YG	CW	REA	FAT
8	0.8	69	112	0.26	1.74	26	5	13	5	19	0.53	0	24	0.23	0.01

**8**

**WW J15E**

Bull Reg. #4701721 Tattoo: J15E DOB: 10/21/2021 A-100% AR

BW	BR	WW	WR	YW	YR
74		558		1265	

BECKTON NEBULA P P707  
**HXC SYNDICATE P707 5013C**  
 HXC 502R

BECKTON NEBULA M045  
 BECKTON LANA M809 EP  
 BECKTON JULIAN GG B571  
 HXC JAYLO LB136

BADLANDS NET WORTH 23U  
**3J MS ARIANNA Y4908**  
 LSF MATTIE 8021 4908

PFFR SHAQ 607  
 BADLANDS MEDORA 406  
 LCC NEW CHAPTER A705L  
 DGR MATTIE 8021

ProS	HB	GM
116	71	45

CED	BW	WW	YW	ADG	DMI	Milk	ME	HPG	CEM	STAY	Marb	YG	CW	REA	FAT
8	0.8	69	112	0.26	1.74	26	5	13	5	19	0.53	0	24	0.23	0.01



**HXC SYNDICATE P707 5013C**

Sire of Lots 2, 5, 6, 7 & 8

## LOTS 9, 10 & 11

We routinely hear from commercial customers that they look for multiple bulls that are sired by one sire. They want half-sibs so that their calf crop has greater consistency at weaning time and, ultimately, all the way to the rail. Whether you sell after weaning or retain ownership all the way to the packer, buying half-brothers makes good business sense for large-scale ranches. Lots 9-11 are all sired by Steel Caps Incredibow 8114.



Lot 9



Lot 10

### 9 STEEL CAPS INCREDIBOW 1814

Bull Reg. #4515733 Tattoo: 1814 DOB: 8/14/2021 A-100% AR

BW	BR	WW	WR	YW	YR
65	95	590	98	857	99

FEDDES SILVER BOW B226  
**STEEL CAPS INCREDIBOW 8114**  
VF LADY KATYA 1672-A197

DAMAR BOONE STATE A433  
**DDAD STAR GIRL**  
DDAD STAR VICILA

BROWN JYJ REDEMPTION Y1334  
FEDDES LAKINA Y17  
BROWN INCREDABULL Z7277  
VF LADY KATYA A197-687

LJC MISSION STATEMENT P27  
MESSMER BRONTE V024  
DJH GRAND ROBBER 677  
SLGN COWGIRL 193Y

ProS	HB	GM
115	62	52

CED	BW	WW	YW	ADG	DMI	Milk	ME	HPG	CEM	STAY	Marb	YG	CW	REA	FAT
12	-2.3	65	109	0.27	1.62	25	10	11	6	18	0.49	0.13	33	0.17	0.03

- Ranks in the top third of the breed for all three RAAA index values. Also ranks in the top third of the breed or better for six additional EPD rankings.
- Medium-plus frame, muscular build, long bodied.
- Will be the type of bull that is power and growth oriented and will add pounds to virtually any calf crop.
- 1814 is more easily excitable than most of our bulls and would not be a good choice for producers who like to be casually close to their cattle. He would work better on a large ranch and handled by cowboys. He is very comfortable in a herd setting.

### 10 STEEL CAPS INCREDIBOW 1815

Bull Reg. #4515735 Tattoo: 1815 DOB: 8/15/2021 A-100% AR

BW	BR	WW	WR	YW	YR
68	107	661	109	938	108

FEDDES SILVER BOW B226  
**STEEL CAPS INCREDIBOW 8114**  
VF LADY KATYA 1672-A197

BROWN PREMIER X7876  
**STEEL CAPS ROSE BUD 9223**  
DKA ROCK 635

BROWN JYJ REDEMPTION Y1334  
FEDDES LAKINA Y17  
BROWN INCREDABULL Z7277  
VF LADY KATYA A197-687

BECKTON NEBULA P P707  
BROWN MS DESTINATION T7664  
3J ONE OF A KIND A228  
HUS LEONA 2780 W99

ProS	HB	GM
136	75	62

CED	BW	WW	YW	ADG	DMI	Milk	ME	HPG	CEM	STAY	Marb	YG	CW	REA	FAT
10	-1.3	70	115	0.28	1.54	27	7	12	6	19	0.63	0.16	33	0.07	0.03

- We really like this guy. As you can see from his photo and video posted online at [www.redalliance.biz](http://www.redalliance.biz), he is phenotypically attractive and well balanced in his design.
- His pedigree and EPD profile indicate that he is worth consideration as a seedstock prospect.
- The Incredibow sire paired with a Brown Premier daughter really clicked well on this effort. An expanded search of his pedigree reveals many breed greats with Nebula P707, Destination, The Right Kind, One of A Kind, Redemption and with a splash of excellent Angus breeding. This pedigree is as hot as a straight shot of whiskey.
- Top 3% for ProS, 12% for HerdBuilder and 11% for GridMaster and seven other EPD traits in the top third of the breed.





## 11 STEEL CAPS INCREDIBOW 1731

Bull Reg. #4515731 Tattoo: 1731 DOB: 7/31/2021 B-99.9% AR 0.1% XX

BW	BR	WW	WR	YW	YR
71	104	605	100	876	101

FEDDES SILVER BOW B226  
**STEEL CAPS INCREDIBOW 8114**  
 VF LADY KATYA 1672-A197

HRAA U075 X077  
**RAMBO DINA A212**  
 SIS DINA DIVISION 7416

BROWN JVJ REDEMPTION Y1334  
 FEDDES LAKINA Y17  
 BROWN INCREDABULL Z7277  
 VF LADY KATYA A197-687  
 MUSHRUSH LANCER CA U075  
 HRAA ACEA 853  
 SAM'S DIVISION 9109  
 SIS DINA ROBIN 4106

ProS	HB	GM
104	68	36

CED	BW	WW	YW	ADG	DMI	Milk	ME	HPG	CEM	STAY	Marb	YG	CW	REA	FAT
12	-2.1	63	103	0.25	1.61	25	9	11	7	18	0.37	0.12	28	0.02	0.02

- Another high-quality bull that is just right for the commercial cattleman. Note that he is a 99% 1B category registered bull but that does not diminish anything about what he brings to the lucky buyer.
- Once again, Incridibow really delivered on another great one.
- Lengthy made, medium-plus frame with an outstanding EPD profile.

## 12 STEEL CAPS MAKIN HAY 186

Bull Reg. #4515701 Tattoo: 186 DOB: 8/6/2021 A-100% AR

BW	BR	WW	WR	YW	YR
66	98	551	91	791	91

BIEBER MAKIN HAY 9913  
**DKA MAKIN HAY 4106**  
 MONTVUE 1412J KIMA R028

WW EPIC RESULTS 3925  
**STEEL CAPS EVELYN 7226**  
 WW HONEST PERFORMANCE

BIEBER MAKE MIMI 7249  
 BIEBER ADELLE 8958  
 LCC VAQUERO 1412J  
 COP 548 KIMA K22  
 BECKTON EPIC R397 K  
 BLOCKANA GAL P71  
 5L MOUNTAIN MAN 753-5265  
 HONEST GIRL

ProS	HB	GM
92	51	41

CED	BW	WW	YW	ADG	DMI	Milk	ME	HPG	CEM	STAY	Marb	YG	CW	REA	FAT
12	-0.7	58	96	0.24	1.52	26	7	9	8	16	0.32	0.09	34	0.1	0.01

- This bull has been one of the favorites for early visitors to our development center. A great disposition makes him curious and it is not uncommon for him to follow visitors throughout an area we use to entertain guests.
- His Makin Hay sire was a longtime high performer in our program that we unexpectedly lost this past year. His dam comes from a pedigree that is as solid as you can find in the breed. Great performance on top and bottom of his pedigree.



## 13 RETW J38

Bull Reg. #4655157 Tattoo: J38 DOB: 11/2/2021 A-100% AR

BW	BR	WW	WR	YW	YR
71	105	694	106	1059	

HXC NORTH LINE 5526C  
**HXC 7709E**  
 HXC 173Y

HXC SYNDICATE P707 5013C  
**WF SYN GLACIER**  
 WF KIND KEY

LEACHMAN EASTWOOD A065X  
 HXC 502R  
 BECKTON CODY T085 K2  
 HXC 950W  
 BECKTON NEBULA P P707  
 HXC 502R  
 3J ONE OF A KIND A228  
 RED KEY

ProS	HB	GM
74	19	55

CED	BW	WW	YW	ADG	DMI	Milk	ME	HPG	CEM	STAY	Marb	YG	CW	REA	FAT
9	-0.2	67	115	0.3	1.38	25	7	9	4	13	0.38	-0.09	28	0.48	-0.01

- One look at his reference sire photo for HXC 7709E shows you the potential of what J38 could grow into. Packed with muscle and weight that pays on sale day.
- J38's GridMaster Index EPD is in the Top 18% of the breed with seven other EPD traits in the top third of the breed.
- Note that Syndicate is the sire of J38's dam – a great example of stacking a pedigree.



# 14

## RETW J32

Bull Reg. #4654555 Tattoo: J32 DOB: 9/30/2021 A-100% AR

BW	BR	WW	WR	YW	YR
68	98	467	80	992	

HXC ALLEGIANCE 5502C  
**WF RED ALLEGIANCE**  
 RED KEY

3J MR MAC W511  
**RETW EMERALD**  
 OLC ST ANGELA M178

LEACHMAN PLEDGE A282Z  
 HXC 100Y  
 GLACIER CHATEAU 744  
 RETW III ION

UBAR HIGH CAPACITY 224  
 OHRR 63G KIMAS MAHOGANY 105R  
 HOLDEN HI HO 574  
 OLC ST ANGELA J260

ProS	HB	GM
81	43	38

CED	BW	WW	YW	ADG	DMI	Milk	ME	HPG	CEM	STAY	Marb	YG	CW	REA	FAT
9	-0.3	49	84	0.22	1.38	21	3	12	5	14	0.42	-0.05	13	0.34	0.02

- Square-made prospect that has been one of the high performers in the development program.
- Pedigree with proven performance.
- Commercial cattlemen with a good eye for quality will spot this bull.
- Will be one of the stoutest bulls to go through the ring on sale day.

## LOTS 15, 16, 17, 18, 19 & 20

This group of bulls were sired by PIE Fullback 9135. He has been an exciting addition to our program with this group being his coming-out presentation. We are excited about his first group of bulls. As many of you know, we encourage buyers of multiple bulls to consider buying half-brothers in volume to produce uniform groups of calves. This would be a great group to consider.

You will note that this group has a consistent set of what we would refer to as low-birthweight traits with CEDs at 11 or 12 and BW EPDs in the -1.0 to -2.3 range. These are not calving ease numbers but certainly are respectable low birthweight traits for use on moderate-frame cows.

His EPDs are well balanced but, in our opinion, do not accurately reflect what the discerning eye will reveal. This group shows that he is a performer, especially when stacked on an excellent group of cows like these dams.

Buy bulls from this group with confidence. They will produce calves that come easy and grow quickly. We believe that a hidden value from this sire will be the females he will produce. His progeny from this group of bulls will do the same.

# 15

## RETW J43

Bull Reg. #4654557 Tattoo: J43 DOB: 11/20/2021 A-100% AR

BW	BR	WW	WR	YW	YR
72	104	534	103	958	

PIE FULLBACK 7005  
**PIE FULLBACK 9135**  
 PIE CENTENNIAL 6053

A-1 ENVY 524W  
**R BLUE TREAT**  
 RETW LINK PROOF

PIE CINCH 4126  
 PIE MS PATRIOT 536  
 ANDRAS NEW DIRECTION R240  
 PIE CENTENNIAL 4356

SCHULER ENVY 7342T  
 GMM MS CHEYENNE S3612  
 LINK S 0127 3S  
 RETW TRIAL

ProS	HB	GM
94	56	38

CED	BW	WW	YW	ADG	DMI	Milk	ME	HPG	CEM	STAY	Marb	YG	CW	REA	FAT
12	-1.7	61	100	0.25	1.32	25	-2	11	6	15	0.29	0.03	26	0.22	0.01

# 16

## RETW J45

Bull Reg. #4654561 Tattoo: J45 DOB: 10/12/2021 A-100% AR

BW	BR	WW	WR	YW	YR
69	98	529	102		

PIE FULLBACK 7005  
**PIE FULLBACK 9135**  
 PIE CENTENNIAL 6053

3J DUKE Z335  
**W MS BLUE LANCER**  
 R BLUE TREAT

PIE CINCH 4126  
 PIE MS PATRIOT 536  
 ANDRAS NEW DIRECTION R240  
 PIE CENTENNIAL 4356

BECKTON LANCER F442 T  
 LSF MATTIE 8021 4908  
 A-1 ENVY 524W  
 RETW LINK PROOF

ProS	HB	GM
88	56	32

CED	BW	WW	YW	ADG	DMI	Milk	ME	HPG	CEM	STAY	Marb	YG	CW	REA	FAT
12	-1.6	60	96	0.22	1.17	27	4	11	6	16	0.28	0.01	22	0.19	0.01



17

## RETW J39

Bull Reg. #4654563 Tattoo: J39 DOB: 10/3/2021 A-100% AR

BW	BR	WW	WR	YW	YR
72	102	521	100		

PIE FULLBACK 7005  
**PIE FULLBACK 9135**  
 PIE CENTENNIAL 6053

3J DUKE Z335  
**W SWEET LANCER**  
 RETW RED ROMEO

PIE CINCH 4126  
 PIE MS PATRIOT 536  
 ANDRAS NEW DIRECTION R240  
 PIE CENTENNIAL 4356  
 BECKTON LANCER F442 T  
 LSF MATTIE 8021 4908  
 DJH RED TREND 572  
 WRAF SWEET COMBINATION 613

ProS	HB	GM
90	57	33

CED	BW	WW	YW	ADG	DMI	Milk	ME	HPG	CEM	STAY	Marb	YG	CW	REA	FAT
11	-1	63	101	0.24	1.23	26	0	12	6	15	0.28	0.07	27	0.11	0.01

19

## RETW J37

Bull Reg. #4655161 Tattoo: J37 DOB: 10/5/2021 A-100% AR

BW	BR	WW	WR	YW	YR
66		443			

PIE FULLBACK 7005  
**PIE FULLBACK 9135**  
 PIE CENTENNIAL 6053

3J DUKE Z335  
**WF MS ENVY**  
 R BLUE TREAT

PIE CINCH 4126  
 PIE MS PATRIOT 536  
 ANDRAS NEW DIRECTION R240  
 PIE CENTENNIAL 4356  
 BECKTON LANCER F442 T  
 LSF MATTIE 8021 4908  
 A-1 ENVY 524W  
 RETW LINK PROOF

ProS	HB	GM
95	60	35

CED	BW	WW	YW	ADG	DMI	Milk	ME	HPG	CEM	STAY	Marb	YG	CW	REA	FAT
12	-1.7	64	102	0.24	1.25	28	2	11	6	16	0.27	0.02	27	0.24	0.01

18

## RETW J44

Bull Reg. #4655153 Tattoo: J44 DOB: 11/21/2021 A-100% AR

BW	BR	WW	WR	YW	YR
71	100	572	117	950	

PIE FULLBACK 7005  
**PIE FULLBACK 9135**  
 PIE CENTENNIAL 6053

3J ONE OF A KIND A228  
**WF RED KIND**  
 WFRA VAQUERO CASH

PIE CINCH 4126  
 PIE MS PATRIOT 536  
 ANDRAS NEW DIRECTION R240  
 PIE CENTENNIAL 4356  
 BUF CRK THE RIGHT KIND U199  
 BADLANDS CEDAR 922  
 3J CASHIER Z111  
 RETW RED VAQUERO

ProS	HB	GM
93	49	44

CED	BW	WW	YW	ADG	DMI	Milk	ME	HPG	CEM	STAY	Marb	YG	CW	REA	FAT
12	-0.9	69	116	0.29	1.38	29	0	12	5	14	0.32	0.13	33	0.07	0.02

20

## RETW J42

Bull Reg. #4654565 Tattoo: J42 DOB: 10/4/2021 A-100% AR

BW	BR	WW	WR	YW	YR
70	101	495	95		

PIE FULLBACK 7005  
**PIE FULLBACK 9135**  
 PIE CENTENNIAL 6053

3J ONE OF A KIND A228  
**WF SWEET KIND**  
 WRAF SWEET COMBINATION 613

PIE CINCH 4126  
 PIE MS PATRIOT 536  
 ANDRAS NEW DIRECTION R240  
 PIE CENTENNIAL 4356  
 BUF CRK THE RIGHT KIND U199  
 BADLANDS CEDAR 922  
 LSF COMBINATION A301M  
 WRAF ROMEO'S GINGER

ProS	HB	GM
95	48	47

CED	BW	WW	YW	ADG	DMI	Milk	ME	HPG	CEM	STAY	Marb	YG	CW	REA	FAT
12	-1.9	63	107	0.28	1.18	24	-1	13	6	13	0.34	0.15	30	0	0.02



**PIE FULLBACK 9135**  
 Sire of Lots 15, 16, 17, 18, 19 & 20



# 21

## WW J18

Bull Reg. #4626715 Tattoo: J18 DOB: 12/26/2021 A-100% AR

BW	BR	WW	WR	YW	YR
68		615		1035	

BUF CRK THE RIGHT KIND U199  
**3J ONE OF A KIND A228**  
 BADLANDS CEDAR 922

A-1 ENVY 524W  
**WW PATTY 3227**  
 WW GOLDEN CP 1114

BUF CRK LANCER R017  
 BUF CRK SHOSHONE R353  
 RED TASSEL CHIVALRY 1G  
 BADLANDS CEDAR 624

SCHULER ENVY 7342T  
 GMM MS CHEYENNE S3612  
 FRITZ GOLDEN OSCAR 8006  
 WRAF COW PATTY

ProS	HB	GM
102	57	45

CED	BW	WW	YW	ADG	DMI	Milk	ME	HPG	CEM	STAY	Marb	YG	CW	REA	FAT
13	-1.8	58	97	0.25	1.29	25	0	12	6	15	0.52	0.17	19	-0.16	0.03

- Calving ease alert! 68-lb. actual birthweight, 13 CED and -1.8 WW EPD. He will be one of the calving ease bulls we will offer in this sale. He is one of the two youngest bulls in the sale and should be great for use on heifers.
- J18 is a prospect that has attracted a lot of attention from pre-sale visitors to the development center. Phenotypically correct with lots of style.
- His sire, 3J One of A Kind, has been one of the top-producing bulls in our program for a long time. When he was sold to a syndication of buyers we knew that he had potential, but he greatly exceeded those expectations. J18 is typical of what he produces.
- Good disposition.

*Join us in person  
or bid online!*

See page 3 for  
registration information



**Bid Live Online**

"Gave's Down, The Best!"

(516) 366-0734 CCI.live schedule@cci.live

# 22

## STEEL CAPS 1910

Bull Reg. #4515739 Tattoo: 1910 DOB: 9/10/2021 A-100% AR

BW	BR	WW	WR	YW	YR
63	95	614	102	880	101

SIX MILE SIGNATURE 295B  
**RED BLAIR'S SIGNATURE 905F**  
 RED OTMC REBA 49A

BIEBER MAKIN HAY 9913  
**MBR POSITIVE MONEY 737ET**  
 MS NSF PROOF POSITIVE J059

RED SIX MILE GRAND SLAM 130Z  
 RED SELMA OF SIX MILE 358X  
 RED SSS ARSON 85U  
 RED MCRAE'S REBA 49W

BIEBER MAKE MIMI 7249  
 BIEBER ADELLE 8958  
 LMN PROOF POSITIVE1305E  
 MS NSF LITTLEJOHN G393

ProS	HB	GM
53	35	18

CED	BW	WW	YW	ADG	DMI	Milk	ME	HPG	CEM	STAY	Marb	YG	CW	REA	FAT
12	-1.3	60	93	0.21	1.52	22	4	11	8	12	0.25	0.05	21	0.08	0.01

- Unique pedigree that has a track record of solid performance.
- Don't let the EPD profile and rankings on this bull fool you. His sire, Red Blair's Signature, is from Canada and, unfortunately, Canadian bulls do not match up well with the mathematical algorithm the Red Angus database uses to calculate EPDs. One look at this guy will make you question the consistency of EPDs.
- We are confident that sale-day attendees will like this bull.

**Red Alliance • Spring Production Sale**



## LOTS 23 & 24

These are two of the youngest bulls in the offering with birthdates in November and December, so they will trail their contemporaries in size and weight but not in their eventual delivery of performance. Their sire, WF Red Allegiance, has delivered with outstanding results in past sales. We have high expectations for these bulls. Note that Lot 24/J49 has seven EPD traits in the top third of the breed. If you are a two-bull buyer on sale day, take both of these bulls home and produce a very consistent calf crop.

# 23

## W2CC J48

Bull		Reg. #4693577		Tattoo: J48		DOB: 12/26/2021		A-100% AR	
BW		BR		WW		WR		YW	
69				638				1046	

HXC ALLEGIANCE 5502C  
**WF RED ALLEGIANCE**  
RED KEY

BADLANDSPFFRBEEFMAKER638  
**3J MS PENNY Z214**  
PANHANDLE LAURA 4031

LEACHMAN PLEDGE A282Z  
HXC 100Y  
GLACIER CHATEAU 744  
RETW III ION

BADLANDS ALL BEEF 114J  
PFFR CEDAR 3006  
GLACIER PIONEER 939  
7U PEBBLES 9520

ProS	HB	GM
89	46	43

CED	BW	WW	YW	ADG	DMI	Milk	ME	HPG	CEM	STAY	Marb	YG	CW	REA	FAT
9	0.2	58	95	0.23	1.6	23	4	10	4	16	0.43	0.09	28	0.17	0.03

# 24

## W2CC J49

<b>Bull</b>	<b>Reg. #4693575</b>		<b>Tattoo: J49</b>	<b>DOB: 11/25/2021</b>	<b>A-100% AR</b>
	BW	BR	WW	WR	YW
	<b>72</b>		<b>430</b>		

HXC ALLEGIANCE 5502C  
**WF RED ALLEGIANCE**  
RED KEY

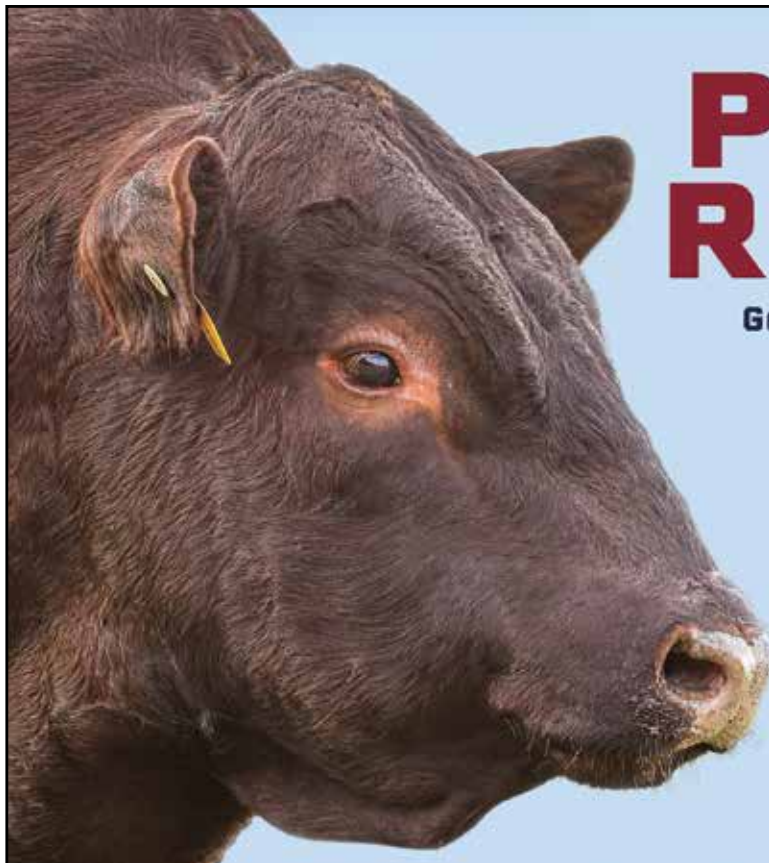
BADLANDS NET WORTH 23U  
**3J MS SHEBA Y216**  
OHRH 63G KIMAS MAHOGANY 105R

LEACHMAN PLEDGE A282Z  
HXC 100Y  
GLACIER CHATEAU 744  
RETW III ION

PFFR SHAQ 607  
BADLANDS MEDORA 406  
SRR RED CANYON 213  
OHRH MS MAHOGANY 63G

ProS	HB	GM
110	61	48

CED	BW	WW	YW	ADG	DMI	Milk	ME	HPG	CEM	STAY	Marb	YG	CW	REA	FAT
9	-0.2	58	97	0.24	1.6	23	5	13	6	17	0.52	0.07	25	0.13	0.02



# PROFIT. REPEAT.

**Generate repeated profits  
with Red Angus bulls.**

Year after year, despite unpredictable market conditions, cattle producers see increased ROI on their Red Angus-sired calves that excel both in the yard and on the rail. Increase your profit potential with Red Angus genetics and experience the Red Angus advantage.

Visit [RedAngus.org](http://RedAngus.org)  
for details on Red Angus  
marketing programs.

**RED ANGUS**  
RANCH TESTED. RANCHER TRUSTED.



**HXC 7709E**  
Sire of Lots 13, 25 & 26

**25**

**RETW J47**

Bull Reg. #4655169 Tattoo: J47 DOB: 10/22/2021 A-100% AR

BW	BR	WW	WR	YW	YR
70		563			

HXC NORTH LINE 5526C  
**HXC 7709E**  
HXC 173Y

3J DUKE Z335  
**W LANCER CHERO**  
RETW ARK

LEACHMAN EASTWOOD A065X  
HXC 502R  
BECKTON CODY T085 K2  
HXC 950W  
BECKTON LANCER F442 T  
LSF MATTIE 8021 4908  
WRAF COMANCHERO  
DRW'S MISSY

ProS	HB	GM
47	13	34

CED	BW	WW	YW	ADG	DMI	Milk	ME	HPG	CEM	STAY	Marb	YG	CW	REA	FAT
9	-0.2	60	97	0.23	1.2	23	11	8	4	13	0.24	-0.15	19	0.48	-0.02

- J47's sire was a massive, pounds-producing bull. We expect the same result here.

**26**

**RETW J41**

Bull Reg. #4654567 Tattoo: J41 DOB: 12/3/2021 A-100% AR

BW	BR	WW	WR	YW	YR
71	102	702	120	999	

HXC NORTH LINE 5526C  
**HXC 7709E**  
HXC 173Y

3J DUKE Z335  
**WF HIHO CAPACITY**  
RETW EMERALD

LEACHMAN EASTWOOD A065X  
HXC 502R  
BECKTON CODY T085 K2  
HXC 950W  
BECKTON LANCER F442 T  
LSF MATTIE 8021 4908  
3J MR MAC W511  
OLC ST ANGELA M178

ProS	HB	GM
62	26	36

CED	BW	WW	YW	ADG	DMI	Milk	ME	HPG	CEM	STAY	Marb	YG	CW	REA	FAT
8	0.4	68	111	0.27	1.3	26	9	9	4	14	0.24	-0.15	23	0.52	-0.01

- With a December birthdate, J41 will be one of the younger bulls in this sale at 16 months of age, but don't let that deter your interest.
- J41 is going to be a power and growth type of bull with his WW, YW and ADG EPDs being in the Top 22% of the breed.

**27**

**RETW J35**

Bull Reg. #4655155 Tattoo: J35 DOB: 10/16/2021 A-100% AR

BW	BR	WW	WR	YW	YR
70	101	618	94	925	

PIE RIGHT TIME 347  
**PIE RIGHT TIME 9556**  
PIE JULY DALLES 416

HXC ALLEGIANCE 5502C  
**WF JDG**  
WICKMAN CT332

BUF CRK THE RIGHT KIND U199  
TKP OSIE 1244  
LSF SAGA 1040Y  
PIE JULY DALLES 2329  
LEACHMAN PLEDGE A282Z  
HXC 100Y  
A-1 ENVY 524W  
LONK ANNE 2034

ProS	HB	GM
76	20	55

CED	BW	WW	YW	ADG	DMI	Milk	ME	HPG	CEM	STAY	Marb	YG	CW	REA	FAT
10	-1	57	99	0.26	1.36	23	5	13	4	11	0.46	-0.04	22	0.33	0

- Calving ease prospect with a very strong pedigree. The Right Time breeding on top of an HXC Allegiance dam was a good combination.
- 70-lb. actual birthweight, 13 CED and -2.7 BW EPD.





# RED ANGUS EMBRYO PACKAGES

Elite Frozen Genetics – Brought to You by Elite Red Angus Breeders!



**BIEBER CL ENERGIZE F121**  
Sire of Lots 28A & 28B



**BJR LANA 001H** – Dam of Lot 28A



**BJR PRIMROSE 41B** – Dam of Lot 28B

## 28A

### 3 EMBRYOS

*Bootjack Cattle Company*

BIEBER CL ATOMIC C218  
**BIEBER CL ENERGIZE F121**  
BIEBER CL ADELLE 575D

BIEBER CL STOCKMARKET E119  
**BJR LANA 001H**  
TBJR LANA 403

ANDRAS FUSION R236  
BIEBER DATELINE 308Y  
BIEBER HARD DRIVE Y120  
BIEBER ADELLE 297Y  
PIE STOCKMAN 4051  
BIEBER CL ADELLE 475C  
LSF HERDBUILDER 1058Y  
KCC LANA Z2

Selling 3 Conventional Embryos at Genex Billings. Buyer pays all shipping costs for embryos.

### BJR LANA 001H X BIEBER CL ENERGIZE F121

**BJR Lana 001H** (Reg. #4241332) is a full sister to Wallstreet, out of the great donor Lana 403 that averaged \$17,500 on her first two ET sons. Lana 001H ranks in the Top 1-10% for ProS, GM, CED, YW, ADG, CEM, Marb and Top 11-36% for BW, WW, HPG, CW and REA. She has a proven 101 MPPA and is one of the daughters of Stockmarket.

**Bieber CL Energize F121** (Reg. #3958815) is a genetic superstar at ABS who sired the \$185,000 Bieber Jumpstart J137 and \$120,000 LSF BJR High Voltage 1803J! He ranks in Top 1-10% for ProS, GM, CED, BW, ADG, CEM, REA and Top 11-35% for HB, WW, YW, Stay, Marb, CW. He adds rib and muscle in a calving ease package.

## 28B

### 4 EMBRYOS

*Bootjack Cattle Company*

BIEBER CL ATOMIC C218  
**BIEBER CL ENERGIZE F121**  
BIEBER CL ADELLE 575D

LSF HERDBUILDER 1058Y  
**BJR PRIMROSE 41B**  
BASIN PRIMROSE 72T8

ANDRAS FUSION R236  
BIEBER DATELINE 308Y  
BIEBER HARD DRIVE Y120  
BIEBER ADELLE 297Y  
BECKTON EPIC R397 K  
LSF COVER GIRL S6076 W9037  
BASIN EXT 1925  
BASIN PRIMROSE 2043

Selling 4 Conventional Embryos at Genex Billings. Buyer pays all shipping costs for embryos.

### BJR PRIMROSE 41B X BIEBER CL ENERGIZE F121

**BJR Primrose 41B** (Reg. #1665023) is out of a full sister to the foundation sire – Basin EXT 5233. Note their dam [Basin Primrose 2043] has 112 progeny registered to her including Bieber Let's Roll. 41B has solid balanced EPDs ranking in top 33% for ProS, HB, WW, DMI, Milk, HPG, CEM, YG, CW, REA and BFat.

**Bieber CL Energize F121** (Reg. #3958815) is a genetic superstar at ABS who sired the \$185,000 Bieber Jumpstart J137 and \$120,000 LSF BJR High Voltage 1803J! He ranks in Top 1-10% for ProS, GM, CED, BW, ADG, CEM, REA and Top 11-35% for HB, WW, YW, Stay, Marb, CW. He adds rib and muscle in a calving ease package.



**BIEBER CL STOCKMARKET E119**

Sire of Lots 29A, 29B & 30



**HARMONYS WINDSONG 021**

Dam of Lots 29A & 29B

## 29A

## 4 EMBRYOS

*Bootjack Cattle Company*

PIE STOCKMAN 4051  
**BIEBER CL STOCKMARKET E119**  
 BIEBER CL ADELLE 475C  
 BIEBER MAKE MIMI 7249  
**HARMONYS WINDSONG 021**  
 HARMONYS WINDSONG 0259

LSF SAGA 1040Y  
 PIE LAKOTA 046  
 ANDRAS FUSION R236  
 BIEBER ADELLE 297Y  
 BJR MAKE MY DAY 981  
 BIEBER SIRENA 6708  
 RED FINE LINE MULBERRY 26P  
 BJR WINDSONG 2269

Selling four Grade 1 IVF embryos with buyer getting one Grade 1 IVF embryo free in the purchase as the upfront guarantee. Buyer pays all shipping costs for embryos.

## 29B

## 4 EMBRYOS

*Bootjack Cattle Company*

PIE STOCKMAN 4051  
**BIEBER CL STOCKMARKET E119**  
 BIEBER CL ADELLE 475C  
 BIEBER MAKE MIMI 7249  
**HARMONYS WINDSONG 021**  
 HARMONYS WINDSONG 0259

LSF SAGA 1040Y  
 PIE LAKOTA 046  
 ANDRAS FUSION R236  
 BIEBER ADELLE 297Y  
 BJR MAKE MY DAY 981  
 BIEBER SIRENA 6708  
 RED FINE LINE MULBERRY 26P  
 BJR WINDSONG 2269

Selling four Grade 1 IVF embryos with buyer getting one Grade 1 IVF embryo free in the purchase as the upfront guarantee. Buyer pays all shipping costs for embryos.

## HARMONYS WINDSONG 021 X BIEBER CL STOCKMARKET E119

The Windsong cow is a long-time proven donor at Rhodes Red Angus. She is a big-framed cow with a good disposition and outstanding feet and teats/udder. The Stockmarket bull has been one of the hottest sires in the breed but is no longer producing semen, so embryos may be the only way to access these powerful genetics in the future. Embryos stored at KABSU in Manhattan, Kan.



# REGISTERED RED ANGUS HEIFERS

We are presenting a very good, albeit small, selection of open heifers. These girls are quickly approaching breeding age. This past summer and fall were perhaps the toughest seasons that many of us as ranchers have ever had to manage in our lifetimes. The same goes for the cows that raised calves we present for your review in this sale. The heifers that were raised in this timeframe had to be resilient, hustle, be survivors and thrive or else end up in a feedlot somewhere. A few of these females have the potential to be a cornerstone for an established program or programs that are ramping up and going to the next level. We expect these girls to be popular on sale day!



Lot 30

**30**

**WW JOLINE K40E**

*Whisnand Red Angus*

Open Heifer Reg. #4714317 Tattoo: K40E DOB: 1/23/2022 A-100% AR

PIE STOCKMAN 4051  
**BIEBER CL STOCKMARKET E119**  
BIEBER CL ADELLE 475C

C-BAR CONTOUR 107X  
**JEFFRIES MS JOLINE Z243**  
BROWN MS BIG SKY U7877

LSF SAGA 1040Y  
PIE LAKOTA 046  
ANDRAS FUSION R236  
BIEBER ADELLE 297Y  
HXC CONQUEST 4405P  
BROWN C- ABIGRACE S602  
FEDDES BIG SKY R9  
BROWN C- JOLENE S605

BW	BR	WW	WR
64		508	

ProS	HB	GM
109	44	44

CED	BW	WW	YW	ADG	DMI	Milk	ME	HPG	CEM	STAY	Marb	YG	CW	REA	FAT
15	-3.7	70	110	0.25	1.8	28	10	9	8	15	1.04	0.06	20	0.31	0.05

This heifer is wrapped in quality throughout her pedigree. A couple of years ago we purchased a set of embryos at Cattleman's Congress in OKC on an up-and-coming sire named Bieber CL Stockmarket and a highly proven Joline dam from the Jerry Jefferies program. That combination really clicked. For seasoned Red Angus seedstock producers, the depth of quality in her pedigree does not need commentary. It reads like a who's who of Red Angus breed greats. We encourage experienced breeders to access her pedigree online and look at an even further expanded pedigree. The quality runs deep.

Joline's EPDs are nothing short of impeccable with nine EPDs in the Top 25% or better in the Red Angus breed. She has it all – RAAA index ratings, calving ease, growth traits and off-the-chart carcass traits.

She has been raised with every other heifer we have in a pasture that was very marginal when it comes to grass quality this past summer and fall. We don't have the luxury of pampering replacement females. They either develop well in the environment we have, or they don't. Joline is not going to be pumped up like a show heifer on sale day, but she will be plenty pretty for sale attendees to enjoy and judge for themselves.

We decided to place this 13-month-old heifer in the sale for the sake of allowing someone else an opportunity to jumpstart their program with a specimen that has the potential to be a big-time donor cow. Manage her properly and she will pay off! Sells open.



**31**

## WW MELODY K29

*Whisnand Red Angus*

Open Heifer Reg. #4714181 Tattoo: K29 DOB: 2/17/2022 A-100% AR

GILCHRIST HIGH ENDURANCE  
**WW ENDURING RESULTS 8224**  
 WW BLOCKANA 9122E

A-1 ENVY 524W  
**WW ROCKIN ANNE 2227**  
 WRAF MELODY 6224

SCHULER ENDURANCE 2101Z  
 BIEBER YOD 340X  
 RED FINE LINE MULBERRY 26P  
 BLOCKANA GAL P71  
 SCHULER ENVY 7342T  
 GMM MS CHEYENNE S3612  
 LMAN KING ROB 8621  
 BJR MELODY 002-Y715

														ProS	HB	GM
														96	57	57
CED	BW	WW	YW	ADG	DMI	Milk	ME	HPG	CEM	STAY	Marb	YG	CW	REA	FAT	
11	-0.2	65	109	0.28	1.89	26	10	12	8	16	0.39	0.11	30	0.12	0.02	

This heifer has an exceptional pedigree that includes two cow families that are legendary in the breed – Blockana and Melody. Both cow families originated in the Boot Jack Ranch program that needs no introduction to experienced breeders.

On the top side of her pedigree is the Gilchrist High Endurance-sired WW Enduring Results 8224 that is a mountain of a bull. His performance to date has been impressive, and you will see much more of his progeny in the future. He was paired with a Red Fine Line Mulberry dam that has impeccable phenotype.

The bottom side with the 2227 dam is stacked with A-1 Envy, Schuler Envy and King Rob as sires, along with multiple donor dams. Give this heifer a close review on sale day. We believe that she is full of potential. We expect her to grow into a large frame like her mother in the 1,350-lb. range. Sells open.

**RED**  
**ALLIANCE**

PHOTOS AND VIDEOS  
 WILL BE POSTED ONLINE AT  
[www.redalliance.biz](http://www.redalliance.biz)



## LOTS 32 & 33

These two heifers are twins out of one of our best brood cows that always delivers a great calf, and in this case, two calves. If you are an EPD chaser, these girls will not be for you. Despite not having highly ranked EPDs, there are plenty of donor cows in their pedigrees, which speaks well about the foundation in their breeding. Both heifers were raised by their dam with no assistance in a very tough drought environment That says a lot about the momma and what these heifers will grow up to be. Sired by the powerful 8224 bull. They sell open.

RED  
ALLIANCE



Lot 33

RED  
ALLIANCE



Lot 32

### 32 WW MOMMA'S GIRL K21T

*Whisnand Red Angus*

Open Heifer Reg. #4714215 Tattoo: K21T DOB: 1/26/2022 A-100% AR

GILCHRIST HIGH ENDURANCE  
**WW ENDURING RESULTS 8224**  
WW BLOCKANA 9122E

A-1 ENVY 524W  
**WW BIG GIRL 41114**  
AQUILA BH 4100-949

SCHULER ENDURANCE 2101Z  
BIEBER YOD 340X  
RED FINE LINE MULBERRY 26P  
BLOCKANA GAL P71  
SCHULER ENVY 7342T  
GMM MS CHEYENNE S3612  
BASIN HOB0 215D  
AQUILA 4100

BW 69 BR WW 507 WR

ProS	HB	GM
95	61	61

CED	BW	WW	YW	ADG	DMI	Milk	ME	HPG	CEM	STAY	Marb	YG	CW	REA	FAT
12	-1.3	59	99	0.25	1.76	22	10	12	8	17	0.37	0.11	26	0.03	0.02

### 33 WW MOMMA'S GIRL 2126

*Whisnand Red Angus*

Open Heifer Reg. #4714187 Tattoo: 2126 DOB: 1/26/2022 A-100% AR

GILCHRIST HIGH ENDURANCE  
**WW ENDURING RESULTS 8224**  
WW BLOCKANA 9122E

A-1 ENVY 524W  
**WW BIG GIRL 41114**  
AQUILA BH 4100-949

SCHULER ENDURANCE 2101Z  
BIEBER YOD 340X  
RED FINE LINE MULBERRY 26P  
BLOCKANA GAL P71  
SCHULER ENVY 7342T  
GMM MS CHEYENNE S3612  
BASIN HOB0 215D  
AQUILA 4100

BW 66 BR WW 469 WR

ProS	HB	GM
95	61	61

CED	BW	WW	YW	ADG	DMI	Milk	ME	HPG	CEM	STAY	Marb	YG	CW	REA	FAT
12	-1.3	59	99	0.25	1.76	22	10	12	8	17	0.37	0.11	26	0.03	0.02

34

## W2CC BLOCKANA 233

W2CC

Open Heifer Reg. #4714915 Tattoo: 233 DOB: 3/3/2022 A-100% AR

GILCHRIST HIGH ENDURANCE  
**WW ENDURING RESULTS 8224**  
 WW BLOCKANA 9122E

RED SOO LINE POWER EYE 161X  
**WCR MS BLOCKANA PE 3047A**  
 FEDDES BLOCKANA 406

SCHULER ENDURANCE 2101Z  
 BIEBER YOD 340X  
 RED FINE LINE MULBERRY 26P  
 BLOCKANA GAL P71  
 RED COCKBURN RIBEYE 308U  
 RED TR LYNN 301R  
 GLACIER CHATEAU 744  
 FED'S BLOCKANA 4225

BW  
74

BR  
106

WW  
484

WR

ProS HB GM  
101 57 57

CED	BW	WW	YW	ADG	DMI	Milk	ME	HPG	CEM	STAY	Marb	YG	CW	REA	FAT
12	0.1	67	113	0.28	1.83	24	6	11	7	16	0.38	0.13	36	0.08	0.02

This will be the youngest heifer in the sale and, therefore, a month or two behind the others in age, but she is gaining on them fast. Her dam, 3047A, was our top choice out of the Wildcat dispersal sale several years ago. Why? Because of her Blockana pedigree and the cow family's outstanding track record. 233's dam is a powerfully built, large-frame cow that catches attention from visitors to the ranch. We love her! An interesting aspect of 233's pedigree is that she has Blockana breeding on both the top and bottom of her pedigree with her sire, WW 8224, being out of a top donor cow in our program, WW Blockana 9122E. Double-bred Blockana breeding will attract attention on sale day. Sells open.

35

## WW CHERABELLE K21

Whisnand Red Angus

Open Heifer Reg. #4714189 Tattoo: K21 DOB: 1/22/2022 A-100% AR

GILCHRIST HIGH ENDURANCE  
**WW ENDURING RESULTS 8224**  
 WW BLOCKANA 9122E

WW BERRY STOUT 8105  
**WW CHERABELLE 3424**  
 WRAF ROMEO'S GINGER

SCHULER ENDURANCE 2101Z  
 BIEBER YOD 340X  
 RED FINE LINE MULBERRY 26P  
 BLOCKANA GAL P71  
 RED FINE LINE MULBERRY 26P  
 WRAF ALOTTA CHERABELLE  
 BUF CRK ROMEO L081  
 PAR GINGER 627

BW  
73

BR  
105

WW  
465

WR  
92

ProS HB GM  
86 57 57

CED	BW	WW	YW	ADG	DMI	Milk	ME	HPG	CEM	STAY	Marb	YG	CW	REA	FAT
13	-2	59	98	0.25	1.64	23	3	13	8	14	0.33	0.13	23	-0.05	0.02

The Cherabelle cow family has a long and distinguished history of high-performance females. K21 is a deep-ribbed, girthy type of heifer that is a little more coarse in her phenotype design with an excellent disposition. Aside from her Cherabelle cow family distinction, it is interesting to note that her pedigree includes Red Fine Line Mulberry 26P on both the top and bottom of her pedigree. Mulberry is well-known for being a prolific female producer. Expect this heifer to be easy fleshing, milk well, highly maternal and carry it on a medium frame. Sells open.

36

## WW GINGER K28

Whisnand Red Angus

Open Heifer Reg. #4714197 Tattoo: K28 DOB: 2/26/2022 A-100% AR

GILCHRIST HIGH ENDURANCE  
**WW ENDURING RESULTS 8224**  
 WW BLOCKANA 9122E

LMAN KING ROB 8621  
**WW QUEEN GINGER 51114**  
 WRAF ROMEO'S GINGER

SCHULER ENDURANCE 2101Z  
 BIEBER YOD 340X  
 RED FINE LINE MULBERRY 26P  
 BLOCKANA GAL P71  
 LEACHMAN ROBUST 7222  
 LEACHMAN ELEANOR  
 BUF CRK ROMEO L081  
 PAR GINGER 627

BW  
74

BR

WW  
495

WR

ProS HB GM  
77 47 47

CED	BW	WW	YW	ADG	DMI	Milk	ME	HPG	CEM	STAY	Marb	YG	CW	REA	FAT
12	-0.9	61	104	0.27	1.65	26	6	12	8	14	0.26	0.11	27	0.07	0.02

Attractive heifer that will appeal to many folks. Strong pedigree but not a heifer that will "wow" you with her EPDs. Her dam has been a steady producer for us and was sired by the immortal King Rob 8621. Based on her dam and grand-dam's performance, expect her to be very maternal, fertile, an excellent milker, easy fleshing and have great longevity. Sells open.

*Mark your calendar!*

**Sale starts at Noon, Thursday, March 9, 2023**

*Please note that this is the normal sale date for Groesbeck Auction and Livestock.*

*Come early to view the bulls and get a good ringside seat.*

*Our Red Alliance Red Angus cattle sell first!*



# Research Validates Red Angus as Most-Favored Female

**Ranchers across the country have long recognized the value of Red Angus females as the foundation of a profitable cowherd. Now, independent research validates those years of cattle production experience with tangible data proving the Red Angus heifer's worth.**

## Research Confirmation

Esther McCabe, et al., of Kansas State University, led a study that confirmed Red Angus are the most-favored female in the industry. McCabe and her team compiled five years' worth of pricing data from Superior Livestock Auction, comparing 13,804 lots of heifer calves totaling over 1.2 million head that sold in 116 video auctions.

The research team evaluated the effects of independent variables on the sale price of heifer calves that fell into six different breed composition groups: English, English crosses, English-Continental crosses, Black Angus-sired out of dams with no Brahman influence, Red Angus-sired out of dams with no Brahman influence, and Brahman-influenced.

They deduced that Red Angus-sired heifer calves bring \$5 to \$9 more per hundredweight than all other breed types.

## Rancher Trusted

While market research validates the price advantage of Red Angus heifers, ranchers have tested and trusted her worth on the range for years. Red Angus females are desirable as replacement heifers because they mature into productive mother cows that reward producers with extra dollars in their pockets on sale day.

Red Angus cows have gained ranchers' trust as a complete package through fertility, fleshing ability, good disposition, longevity and excellent overall production. They produce feeder calves that earn premiums in the yard and on the rail through docility, feed efficiency, conversion and carcass merit.

Over the years, stockmen have voted with their checkbooks, purchasing heifers they know will bring profitability to their ranching businesses – and Red Angus females are their most-favored choice. ■



*Independent research studying five years of Superior Livestock Auction data confirms the value of Red Angus replacement females.*

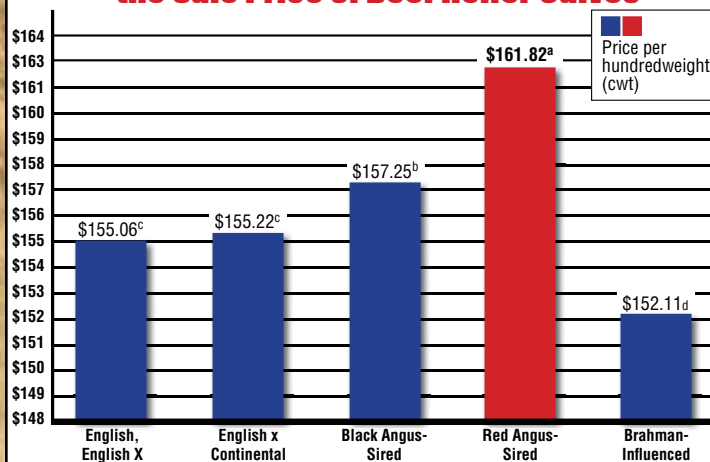
## Red Angus Stockyard

List or locate quality Red Angus replacement females at [stockyard.redangus.org](http://stockyard.redangus.org). Over 20,000 head of cattle are sold each year through the Red Angus Stockyard.

## FeMail

An electronic tool to help locate or market ranch-tested replacements. Market your open heifers, bred heifers or cows, or cow-calf pairs. FeMails are designed for offerings of 25 head or more to complement listings on the Red Angus Stockyard.

## Breed and Gender Interact to Affect the Sale Price of Beef Heifer Calves\*



\* McCabe, et al., 2016. Breed and gender interact to affect the sale price of beef calves sold through video auctions from 2010 through 2014. J. Animal Science, Volume 94, Supplement 2, pp 28.

<sup>a-d</sup> Means with unlike superscripts differ (P<0.05).



## FREEZER BEEF

One truth about the cattle business is that not all bull calves are qualified to grow up and be bulls. That is OK. We have a saying that we use – One of the great things about the cattle business is that you can eat your mistakes!

Over the past few years we have committed to a growing demand for people looking for steers to buy for fresh beef that folks know have been raised hormone free and in natural grass pastures. In addition to grazing grass in a pasture, they are also fed a textured feed ration at the rate of 1.5% of their body weight. One of our members, Steel Caps Cattle Company, is also moving toward arranging for processing of steers at a USDA-certified beef inspection facility that will allow them to sell “bundles” of meat to customers in the North Texas area.

From time to time, all of our members are offering steers to the public fresh off the farm. Take them to the processor of your choice, split them with family and friends. See our list of team members on page 2 for contact information if you are interested in buying hormone-free, pasture-raised steers.



## *Sale Terms and Conditions*

**TERMS:** Terms of the sale are cash or check payable immediately upon conclusion of the sale before animals will be moved. Red Alliance reserves the right to require a certified check as settlement before releasing any cattle.

**PURCHASER'S RISK:** All animals are the owner's risk prior to their sale and become property of the purchaser as soon as declared sold by the auctioneer.

**BIDDING:** Any disputes or challenges regarding bids or tie bids will be settled by the auctioneer and his decision will be final.

**CERTIFICATE OF REGISTRY:** A certificate of registry for each registered animal will be transferred to the buyer at the seller's expense.

**ANNOUNCEMENTS:** Any errors or changes in information contained in the catalog will be announced from the block and such announcements shall take precedence over the information contained herein.

**BREEDING GUARANTEE:** All animals are guaranteed by the seller as outlined in the Red Angus Association of America Code of Ethical Sale Practices.

**HEALTH:** All animals are eligible for interstate shipment. Interstate health papers prepared by an accredited veterinarian can be furnished on each animal sold. Arrangements for international shipment should be made with Red Alliance prior to the auction. All efforts for the exportation of cattle can be arranged through the sale manager.

**LIABILITIES:** All persons who attend the sale do so at their own risk. The seller, auction facility and Red Alliance assume no liability for any accidents that may occur. Neither does the seller, auction facility, or Red Alliance assume liability for the loss or injury to livestock due to theft, mysterious disappearance, sickness, improper handling or Act of God.

**CONTRACT:** The above terms and conditions of sale shall constitute a contract between the buyer and seller of each animal and shall be equally binding upon both. Each sale or resale of an animal constitutes a separate transaction.

**PHONE BIDS:** Telephone bids will be taken by the auctioneer, ring men, or Red Alliance members. Phone contact information is located on the inside front cover of this catalog.





## TARGETED NUTRITION PROGRAMS FOR SERIOUS RANCHERS

---

**CUSTOM BLENDED FEED PROGRAMS** with a local staff as passionate about serving our customers as you are about your operation. **YOU DESERVE THE SERVICE AND RELATIONSHIP** of a local company with the resources of a large one.

With over 15 locations, our nutritionists, experienced sales staff and committed employees are focused on delivering one thing... **BETTER FEED, BETTER RESULTS.**

☎ 800.777.1562    ✉ [INFO@LNC-ONLINE.COM](mailto:INFO@LNC-ONLINE.COM)

[LNC-ONLINE.COM](http://LNC-ONLINE.COM)

**RED ALLIANCE**

Brian Whisnand  
534 County Road 4505  
Whitewright, TX 75491

# RED ALLIANCE

Check often for updates, photos and videos!

**[www.redalliance.biz](http://www.redalliance.biz)**



*Join us  
in person or online!*



See page 3 for details

*21<sup>st</sup> Annual*  
**SPRING  
PRODUCTION SALE**

**Thursday, March 9, 2023**

**12:00 p.m. · Groesbeck Auction & Livestock · Groesbeck, Texas**

***Offering a select group of registered Red Angus open heifers and elite embryos!***



**Lot 30**



**Lot 32**



**Lot 33**

Registered Red Angus females are hard to find in Texas this year. Don't miss the opportunity to consider these open heifers for your herd!