



***We invite you to the
Gilchrist / Star G Ranch
Auction Barn***

*12144 Dove Avenue, Douds, IA 52551
Lunch at 12:00 – Auction at 1:00 p.m.*

*Join us in person or
on the internet!*

**KEMEN FARMS RED ANGUS
KOEDAM CATTLE COMPANY
STAR G RANCH, INC.**



DVAuction
Broadcasting Real Time Auctions

SATURDAY, MARCH 16, 2024 • DOUDS, IA



Welcome!



Koedam



Kemen



Gilchrist

Steve & Christina Koedam / Koedam Cattle Company

Koedam Cattle Co. was started by Steve & Christina Koedam after exiting dairy farming in late 2011. In 2012, a small herd of commercial cattle were purchased with the first registered Red Angus in 2013. Koedam Cattle Co. is located in SW Minnesota, near Leota, roughly 50 miles NW of Sioux Falls, South Dakota. The Koedam Family has farmed in the area over 100 years and currently calve 100+ cows, 20-30 heifers per year both registered Red Angus and commercial. They also crop farm raising corn, soybeans and alfalfa. They strive to put together a quality herd to produce quality replacement females and bulls for their customers and have sold replacement cows/heifers private treaty. Their first bull sale started with a trip to the Sioux Empire Farm Show (they have since joined the Red Reckoning group for bull sales) and the ROP/MN Great Northern for female sales. 3SCC Laser Focused C171 has had the biggest impact on the Koedam herd to date, producing tremendous females and bulls. The Koedams are looking forward to seeing the first progeny from bred heifers/cows purchased in 2022 from W Sunrise Angus, Green Mountain Red Angus, Craig Davis and Reisdorfer Red Angus. Steve was recently elected as Vice President of the Minnesota Red Angus Association and enjoys his Red Angus cattle and welcomes any questions and/or visiting about their program.

Dale, Dave, Gary & Brock Kemen / Kemen Farms Red Angus

The Kemen Farms Red Angus operation consists of brothers Dale, Dave, Gary and Dale's son Brock in a farming partnership that grows corn, soybeans, wheat and alfalfa in a rotational crop regiment. Kemen Farms first registered Red Angus purchase was a group of 20 bred heifers from Sonstegard Cattle Co. in 1993 making this their 30th year in the business. They currently run 300 cows with approximately 240 of them being registered Red Angus and the balance high percentage Red Angus commercial females with a few black cows. They offer a high-quality set of registered bred heifers annually in the ROP/GN Great Northern Sale in Brookings, South Dakota. Dave Kemen served for 23 years on the Midwest Cattlemen's board and was recently elected to President of the Minnesota Red Angus Association. Kemen Farms is responsible for feeding and developing the Spring Red Reckoning bulls from October to late February where the bulls are clipped, scanned and fertility tested before they are shipped to southern Iowa and the Star G Ranch for DVAuction videos. In the inaugural Red Reckoning Sale in April 2021, Kemen Farms had the 2 top selling bulls (both Stockmarket sons) — \$14,500 LLRA Limit Up and \$12,000 KFRA H2 Mr Stockmarket. Dave will be at the Red Reckoning Auction on March 17th and 18th to answer any questions you may have regarding the feeding of the Spring bulls and the Kemen Farms Red Angus program.

Kyle Gilchrist / Star G Ranch, Inc

The Gilchrist family has been raising registered Red Angus cattle since 1973 starting with Kenneth & Janet Gilchrist producing bulls for Pioneer Beef Cattle in the '70s and then Mid America Cattle Co. in the '80s. Today, Kyle operates Star G Ranch Inc. as a grass and hay operation, growing no row crops and utilizes the easy fleshing abilities of Red Angus genetics to maximize outputs through their efficiencies. After developing and selling bulls in Oklahoma and Texas for 20 years with the Red Alliance group, the Star G Ranch built an auction facility in 2021 and began selling bulls from Southeast Iowa through the Red Reckoning Auctions the third Saturday of March and Red Angus females in the Star G Ranch & Friends Auction the second Saturday of October. The Star G Ranch is exclusively a fall calving herd with a bull battery including: Gilchrist Royal Peacock, Chappell Home Run H418, Gilchrist Final Deal 105J, LSF Fantastic 9206G along with artificial breeding to Raisland Quarterback 2704, Smoky Y Stark Y14 and Gilchrist High Endurance. Commemorating 51 years in the Red Angus business, our current goal is to balance traits in our cattle that work in our environment. We have been carcass scanning all of our cattle and using sire lines with exceptional REA and IMF measurements and believe you must know what's under the hide in order to make sound breeding decisions for the beef industry. We welcome you to the ranch and our auction facility.



Saturday, March 16, 2024

at the Gilchrist / Star G Ranch Auction Barn

12144 Dove Avenue, Douds, IA 52551

Join us in person or on the internet

Lunch at 12:00 – Auction at 1:00 p.m.

Sale Day Phones:

Steve Koedam..... 507/920-7594
Dave Kemen 320/212-2478
Kyle Gilchrist 641/919-1077
Dan Grupe..... 605/881-7647

Auctioneer:

Kyle Gilchrist 641/919-1077

Ringmen:

Bill Schermer 641/425-2641 *The Stockman*
Mike Goehring 319/288-0704 *Special Assignment*
Austin Sorenson 712/310-3788 *Midwest Marketer*

Buyer Representatives:

Thor Nelson (MN/SD)..... 320/226-1758
Richie Traylor (Southeast)..... 334/646-9074

Sale Day Veterinarian:

Gene Hoy, DVM 641/660-2185

Motels:

Fairfield, Iowa (15 miles Northeast)

Americinn 641/451-6600
Super 8 641/469-2000

Ottumwa, Iowa (29 miles Northwest)

Americinn 641/684-8222
Quality Inn 641/682-8526

Insurance:

BULL MORTALITY INSURANCE WILL BE AVAILABLE

Jame Krieger..... 812/208-0956 • jame@kriegerfarms.com
BritAmerica Management Group, Inc. for Lloyd's, London


*Online Bidding and Cattle Videos
available at:*

DVAuction
Broadcasting Real-Time Auctions

CATALOG AVAILABLE AT WWW.REDCOWS.NET

Catalog design by *Stockman Design Services, The Stockman Magazine*

RED RECKONING BULLS

- HAVE GGP GENOMIC DNA TEST 
- PASSED A FERTILITY / SEMEN CHECK
- ARE GUARANTEED BREEDERS

Free Delivery Points for Bulls

Deliveries include Iowa; Missouri; Minnesota; Oklahoma City, Oklahoma; Cullman, Alabama and interstate points along the way. (Deliveries will begin the week following the auction – for free delivery, the buyer must work with our delivery schedules or buyer will need to pick up at the Star G Ranch Auction Barn.)

Bulls will be fed free of charge until April 1st.

Beginning April 1st, feed @ \$4.00 per head per day will be charged for bulls still at the auction site or transported to Kemen Farms or Koedam Cattle Co. in Minnesota. Bulls become the property of the buyer when declared sold from the auction block. All bulls remaining at the Star G Ranch or Kemen Farms/Koedam Cattle Co. are at the risk of the buyer. **We highly suggest insuring bulls that are not picked up sale day.**

Videos of the Bulls & Commercial Females on DVAuction.com

Do you have Red Angus females for sale?

We are in the market for commercial Red Angus females sired by Red Reckoning bulls. Buy Red Reckoning bulls and contact us when you have commercial females to sell — we want to help market your cattle!



Lot
1

Lot
1

KFRA MR BLUE CHIP L345

KFRA / L345 1A 100% AR BD: 2/9/23 RAAA#4846942 BULL

SIRE / BIEBER BLUE CHIP H302

PIE STOCKMAN 4051
BIEBER CL STOCKMARKET E119
BIEBER CL ADELLE 475C
BIEBER IRON ORE A104
BIEBER ROSE 162C
BIEBER ROSE 475A

DAM / KFRA MS PATHFINDER J82

RREDS SENECA 731C
RREDS PATHFINDER F811
RREDS KIMA D607
3SCC NAVIGATE A42
MS NAVIGATE C105
KFRA ABOVE HEAVEN AY42

	DATA	RATIO
BW	84	104
WW	762	130
YW	1180	105
SC	38	

	EPD	TOP%	DATA
REA	0.31	18%	15.7
MARB	0.57	21%	4.09
BFAT	0.05	95%	0.43
YG	0.13	81%	—
CW	34	15%	—
ADG	0.33	3%	0.00

	ProS	HB	GM	CED	BW	WW	YW	MILK	HPG	CEM	STAY
EPD	134	83	52	15	-2.8	85	137	33	11	10	18
TOP%	4%	5%	24%	18%	32%	1%	2%	5%	47%	4%	13%



Lot
1

Our lead-off bull combines everything you would want in a seedstock STUD BULL — pedigree, performance, carcass traits, disposition and phenotype. You won't find long winded footnotes in this catalog — just the facts. This bull excelled with a 762 lb. WW to ratio 130 and rank #1 out of 76 contemporaries. His mama racked up a 112 MPPA with her first attempt — the making of a GREAT COW!


Lot
2

Lot
2

KDM2C ALAMO L227

KDM2C/L227 1A 100% AR BD: 2/18/23 RAAA#4827842 BULL

5L BOURNE 117-48A
5L ULTIMATUM 1893-03C
5L PRETTY GUN 1300-1893
SIRE / LASO ALAMO C92H
BROWN ALLIANCE X7795
LASO LANA A178C
LASO LANA T68A
RED CROWFOOT 4ACES 2193Z
RIDGE ACES 5030
RIDGE SHEILA 009-9015
DAM / JACOBSON 8189
BIEBER ROUGH COUNTRY A523
KDM2C HIGH COUNTRY C426
CRAR MISS HIGH CAPACITY 1225

	DATA	RATIO
BW	80	94
WW	714	107
YW	1209	111
SC	38	

	EPD	TOP%	DATA
REA	0.21	34%	15.9
MARB	0.52	29%	3.54
BFAT	0.04	87%	0.26
YG	0.11	75%	—
CW	29	30%	—
ADG	0.25	34%	0.00

	ProS	HB	GM	CED	BW	WW	YW	MILK	HPG	CEM	STAY
EPD	93	53	40	16	-2.9	73	113	25	15	8	13
TOP%	45%	46%	46%	11%	31%	12%	19%	55%	9%	35%	68%



LASO ALAMO C92H, SIRE

Our Lot 2 bull selection is this stylish Alamo son with an impeccable record including a 15.9 REA / ratio 119 and a 3.54 IMF / ratio 113 ultrasound scan. Dam 8189 is a square made, deep bodied, moderate female that goes back to one of our Foundation females. KDM2C Alamo touts a 714 lb WW/ ratio 107 and a 1209 lb. YW / ratio 111! He still does it all with calving ease (16 CED & -2.9 BW) and a great set of balanced EPDs.


Lot
3

Lot
3

KDM2C B.R. L226

KDM2C/L226 1A 100% AR BD: 2/17/23 RAAA#4827888 BULL

MYTTY IN FOCUS
ANDRAS IN FOCUS B152
ANDRAS PINETA B91
SIRE / 3SCC LASER FOCUSED C171
3SCC DOMINOR W338
3SCC HANNAH Z100
3SCC MISS ET HANNAHHOBO P103
PIE SPECIALIST 430
RED COCKBURN ASSASSIN 624D
COCKBURN CORA 254Z
DAM / BRYLOR 72X VIDALIA 303H
RED FINE LINE MULBERRY 26P
RED BRYLOR VIDALIA 72X
RED BRYLOR VIDALIA 178S

GGP

	DATA	RATIO
BW	95	111
WW	707	106
YW	1277	118
SC	37.5	

	EPD	TOP%	DATA
REA	0.30	20%	15.4
MARB	0.44	45%	2.51
BFAT	0.03	77%	0.25
YG	0.10	70%	—
CW	37	9%	—
ADG	0.34	2%	0.00

	ProS	HB	GM	CED	BW	WW	YW	MILK	HPG	CEM	STAY
EPD	124	65	60	12	-0.3	75	130	30	16	6	16
TOP%	8%	24%	13%	56%	79%	8%	4%	18%	3%	64%	31%

RED RECKONING BULLS...

WHERE QUALITY RUNS DEEPER THAN HIDE COLOR!

KDM2C B.R. L226 is a bull we feel can go out and do a lot of good for the next owner. He has the making of a great all around herd bull. Dam is moving up the ranks to be a Donor prospect. Dam touts 105 MPPA. KDM2C B.R. L226 has great disposition of both dam and sire. Top EPDs in several categories. Check him out. If you get a chance, ask our son Matthew what B.R. stands for.

**Lot
A****BIEBER HARD DRIVE Y120**

RAB/Y120 1A 100% AR BD: 2/11/11 RAAA#1436718 SEMEN

LCHMN GOLD ROBBER 1909E
CCF GOLD BAR 0251**SIRE / LACY GOLD BAR 8123**

BFCK CHEROKEE CNYN 4912

LACY MS CHEROKEE 557P

LACY MS ANNIE 154M

LJC LANCER 806

LJC MISSION STATEMENT P27

LJC HANNAH 106

DAM / BIEBER LAURA 158W

C A FUTURE DIRECTION 5321

BASIN LAURA 5301

BASIN LAURA 3673

**Selling
2 Straws****GGP**

	DATA	RATIO
BW	89	103
WW	644	108
YW	1338	113
SC	36.78	

	EPD	TOP%	DATA
REA	0.70	3%	14.90
MARB	0.69	13%	3.52
BFAT	-0.04	3%	0.28
YG	-0.19	3%	—
CW	39	14%	—
ADG	0.31	12%	4.32



	ProS	HB	GM	CED	BW	WW	YW	MILK	HPG	CEM	STAY
EPD	128	49	79	13	-1.4	85	135	21	20	5	14
TOP%	10%	53%	5%	44%	57%	4%	6%	83%	1%	78%	63%

Offering 2 straws of one of the true patriarchs of the breed – rare opportunity to capture these genetics before they are gone forever!

**Lot
4****KFRA MR ALAMO L531**

KFRA/L531 1A 100% AR BD: 2/13/23 RAAA#4846730 BULL

5L BOURNE 117-48A

5L ULTIMATUM 1893-03C

5L PRETTY GUN 1300-1893

SIRE / LASO ALAMO C92H

BROWN ALLIANCE X7795

LASO LANA A178C

LASO LANA T68A

BECKTON NEBULA P P707

BROWN PREMIER X7876

BROWN MS DESTINATION T7664

DAM / MS PREMIER C26

3SCC DOMINOR W338

KFRA MS LUCKY ZU09

KFRA ABOVE ALL U09

	DATA	RATIO
BW	81	100
WW	663	113
YW	1189	106
SC	35	

	EPD	TOP%	DATA
REA	0.28	22%	15.4
MARB	0.67	11%	3.30
BFAT	0.03	78%	0.31
YG	0.13	82%	—
CW	42	4%	—
ADG	0.32	4%	0.00



	ProS	HB	GM	CED	BW	WW	YW	MILK	HPG	CEM	STAY
EPD	121	53	68	16	-1.5	81	133	27	13	9	15
TOP%	10%	47%	6%	12%	58%	3%	3%	41%	19%	22%	51%

We sampled Alamo as a yearling and have been very well pleased with the results. L531 offers top growth & carcass traits and is backed by a Brown Premier dam that records a 103 MPPA on 7 calves and a 366 day Calving Interval.

**Lot
5****KDM2C REFORMATION L260**

KDM2C/L260 1A 100% AR BD: 3/21/23 RAAA#4827840 BULL

BIEBER ROLLIN DEEP Y118

WEBER REFORM 618

BJF LANA'S EQUAL 8021U

SIRE / WEBER REFORM 85H

WEBR DOC HOLLIDAY 2N

WEBR DAISY 1209

PRESSER'S DAISY 201

PIE ONE OF A KIND 352

RRA AMENDMENT 626

RRA MILLIE N512 406

DAM / LAZYJ FALLYN 876-292

JDB EQUALS THUNDER 302N

LAZYJ ELIZABETH 292-046

MS HIGH QUEEN 046-2657

	DATA	RATIO
BW	98	115
WW	769	115
YW	1266	117
SC	40	

	EPD	TOP%	DATA
REA	0.10	58%	13.3
MARB	0.36	65%	2.50
BFAT	0.03	64%	0.27
YG	0.18	95%	—
CW	45	2%	—
ADG	0.31	7%	0.00



	ProS	HB	GM	CED	BW	WW	YW	MILK	HPG	CEM	STAY
EPD	115	73	42	9	1.4	82	131	27	13	7	18
TOP%	15%	73%	42%	90%	95%	2%	3%	42%	24%	49%	71%

If you choose bulls on phenotypes first then this Reform 85H son will fit. L260 is a bull that has great look since day one. He will be a lot like Reform 85H, add frame and length to calves. Dam is a great RRA Amendment with style and length. Top Pros, HB and growth GPD, 83 WW top 2%, 132 YW to 3%, stay top 11% and CW top 2%.



Lot 6

Lot 6

LLRA HAMMER DOWN L337

LLRA / L337 1A 100% AR BD: 2/8/23 RAAA#4846616 BULL

5L BOURNE 117-48A
5L ULTIMATUM 1893-03C
5L PRETTY GUN 1300-1893
SIRE / LASO ALAMO C92H
BROWN ALLIANCE X7795
LASO LANA A178C
LASO LANA T68A
BASIN HOB0 0545
KFRA STUMPY W66H
3SCC MIKAELA T66
DAM / LLRA MATTIE Y40P
OHRR 06K DAK COPPER 5M
OHRR 14M MAHOGNY LASS 40P
OHRR 65H GRAND MAHOGANY 14M

	DATA	RATIO
BW	81	100
WW	651	110
YW	1244	N/A
SC	35	

	EPD	TOP%	DATA
REA	0.18	41%	12.4
MARB	0.51	30%	3.30
BFAT	0.03	78%	0.30
YG	0.13	81%	—
CW	33	17%	—
ADG	0.28	17%	0.00

	ProS	HB	GM	CED	BW	WW	YW	MILK	HPG	CEM	STAY
EPD				17	-2.4	71	116	32		9	15
TOP%				5%	40%	16%	15%	6%		14%	46%

This is the maternal brother to LLRA Limit Up (\$14,500 Red Reckoning bull in 2021 Red Reckoning selling to Sonstegard Cattle Co. & Star G Ranch). His dam is a proven 106 MPPA on 11 calves and a 362 day Calving Interval. His Limit Up brother is an amazing ultra-calving ease bull and produced the 931 lb. top WW bull of all time in the Sonstegard program — check him out!



PIE HOLLYWOOD 222, SIRE

Lot 7

PIE HOLLYWOOD 222

PIE / 222 1A 100% AR BD: 1/22/22 RAAA#4702973 BULL

CONNEALY CONFIDENCE 0100
CONNEALY CONFIDENCE PLUS
ELBANNA OF CONANGA 1209
SIRE / BROWN CRSB CONFIDENCE G1410
LJC MISSION STATEMENT P27
BROWN MS MISSION STMT B542
BROWN MS P707 Y7850
PIE STOCKMAN 4051
PIE QUARTERBACK 789
PIE RUBY 520
DAM / PIE 0105
SPUR FRANCHISE OF GARTON
C-BAR ABIGRACE 636D
C-BAR ABIGRACE Y11

Selling
1 Straw
XGGP

	DATA	RATIO
BW	82	99
WW	766	121
YW	1478	120
SC		

	EPD	TOP%	DATA
REA	0.75	1%	13.28
MARB	0.95	1%	3.61
BFAT	0.02	62%	0.50
YG	0.04	36%	—
CW	63	1%	—
ADG	0.45	1%	4.44

	ProS	HB	GM	CED	BW	WW	YW	MILK	HPG	CEM	STAY
EPD	113	4	109	18	-3.4	94	166	34	11	9	10
TOP%	17%	99%	1%	4%	23%	1%	1%	2%	49%	22%	94%

Offering 1 straw of semen on the \$400,000 most talked about bull in the Red Angus breed this past season. Take your IVF program to the next level with this purchase!

Lot B

SELLING 3, 6 OR 9 EMBRYOS

If you research Chappell Home Run H418, you will find an astounding EPD profile that is unmatched in the Red Angus breed. You will also find Chappell Miss Molly C330 (his dam) — the amazing cow that produced him. Now combine her genetics with the \$400,000 PIE Hollywood 222 supersire and you have the next cutting-edge Stud Bull production that everyone is on the hunt for! This investment will put your program on the RA worldwide map! Selling 3, 6 or 9 embryos with a guarantee of 1 pregnancy with each set of 3 embryos if implanted by a Certified ET Technician.

EMBRYOS

CONNEALY CONFIDENCE PLUS
BROWN CRSB CONFIDENCE G1410
BROWN MS MISSION STMT B542
SIRE / PIE HOLLYWOOD 222
PIE QUARTERBACK 789
PIE 0105
C-BAR ABIGRACE 636D

BECKTON NEBULA P P707
BROWN PACESETTER Y7170
BROWN MS REVELATION U7748
DAM / CHAPPELL MISS MOLLY C330
LSF WALL STREET 8071U
LSF MAB MISS MOLLY X0705
LSF RR MISS MOLLY U8802

Projected Mating EPDs:

	ProS	HB	GM	CED	BW	WW	YW	MILK	HPG	CEM	STAY
EPD	128	47	82	16	-3.3	81	138	35	11	9	15

Lot C

SELLING 3, 6 OR 9 EMBRYOS

VF Flo Marie 1650-245 has been our top producing Donor Cow for the past few years. and is the dam of Gilchrist Royal Peacock, our top rated High Endurance son with super growth, REA and EPD balance posting nine traits in the top 12% of the Red Angus breed. This mating to the \$400,000 PIE Hollywood 222 will be astronomical in returns for investment. If you want the best of the Red Angus breed, check out this embryo offering! Selling 3, 6 or 9 embryos with a guarantee of 1 pregnancy with each set of 3 embryos if implanted by a Certified ET Technician.

EMBRYOS

CONNEALY CONFIDENCE PLUS
BROWN CRSB CONFIDENCE G1410
BROWN MS MISSION STMT B542
SIRE / PIE HOLLYWOOD 222
PIE QUARTERBACK 789
PIE 0105
C-BAR ABIGRACE 636D

LACY GOLD BAR 8123
BIEBER HARD DRIVE Y120
BIEBER LAURA 158W
DAM / VF FLO MARIE 1650-245
LARSON SUN KING 016
LARSON FLO-MARIE 245-369
LARSON FLO-MARIE 369-18

Projected Mating EPDs:

	ProS	HB	GM	CED	BW	WW	YW	MILK	HPG	CEM	STAY
EPD	105	15	90	15	-1.8	87	151	32	14	7	10

**Lot
8****KFRA MR GAME CHG L519**

KFRA / L519 1A 100% AR BD: 2/11/23 RAAA#4846842 BULL

LSF TAKEOVER 9943W
H2R PROFITBUILDER B403
BROWN MS P707 Y6674
SIRE / GMRA GAME CHANGER 8270F
GMRA LARAMIE 5110
GMRA PRIDSTOM 069
GMRA PRIDSTOM 727
RED LWNBRG HARVESTOR 103C
JACOBSON REAPER 7020
JACOBSON KALLI 3101
DAM / DKK LIBERTY 9180
DKK CAPTAIN 434
DKK LIBERTY 6065
DKK LIBERTY 207

	DATA	RATIO
BW	83	103
WW	689	118
YW	1320	118
SC	38	

	EPD	TOP%	DATA
REA	0.17	43%	13.0
MARB	0.60	18%	3.52
BFAT	0.01	39%	0.29
YG	0.10	67%	—
CW	37	10%	—
ADG	0.36	1%	0.00

	ProS	HB	GM	CED	BW	WW	YW	MILK	HPG	CEM	STAY
EPD	106	45	61	9	0.8	87	146	34	10	4	16
TOP%	25%	64%	11%	90%	91%	1%	1%	3%	67%	92%	34%

**Lot
8**

We can't say enough about the performance of the Game Changers, this one with a 689 lb. WW to ratio 118. His Reaper dam is one of the top females in the Kemen program with a 111 MPPA and a 373 day Calving Interval.

**Lot
9****KFRA MR GRINDSTONE L514**

KFRA / L514 1A 100% AR BD: 2/10/23 RAAA#4846874 BULL

LEACHMAN PLEDGE A282Z
HXC ALLEGIANCE 5502C
HXC 100Y
SIRE / HXC GRINDSTONE 9908G
SPUR FRANCHISE OF GARTON
HXC 605D
HXC 905W
RED SOO LINE POWER EYE 161X
LAZYJ POWER EYE 682-3222
LAZYJ ESHETTA 3222-N460
DAM / KFRA MS POWER G129
LSF BOXED BEEF 9063W
ERIC BELLE B2
ERIC MEGAN WS23

	DATA	RATIO
BW	82	101
WW	664	113
YW	1219	109
SC	41	

	EPD	TOP%	DATA
REA	0.46	5%	15.0
MARB	0.47	38%	2.41
BFAT	0.02	59%	0.17
YG	0.04	33%	—
CW	39	6%	—
ADG	0.32	4%	0.00

	ProS	HB	GM	CED	BW	WW	YW	MILK	HPG	CEM	STAY
EPD	94	40	54	11	-1.1	78	130	32	12	6	13
TOP%	44%	73%	20%	72%	65%	5%	4%	6%	36%	70%	75%



HXC GRINDSTONE 9908G, SIRE

This Grindstone X Power Eye son is another top performer in the Red Reckoning Spring Bull Development Pen. His dam is another great Kemen cow with a 108 MPPA and 361 day Calving Interval.

**Lot
10****KFRA MR GAME CHG L553**

KFRA / L553 1A 100% AR BD: 2/18/23 RAAA#4846770 BULL

LSF TAKEOVER 9943W
H2R PROFITBUILDER B403
BROWN MS P707 Y6674
SIRE / GMRA GAME CHANGER 8270F
GMRA LARAMIE 5110
GMRA PRIDSTOM 069
GMRA PRIDSTOM 727
TE MANIA ADA A149
PARINGA IRON ORE E27
STORTH OAKS LOWAN C1(TW)
DAM / MS IRON ORE D42
LCHMAN.ABOVEHEAVEN1018F
KFRA MS HEAVEN ZW64
KFRA MACY W64

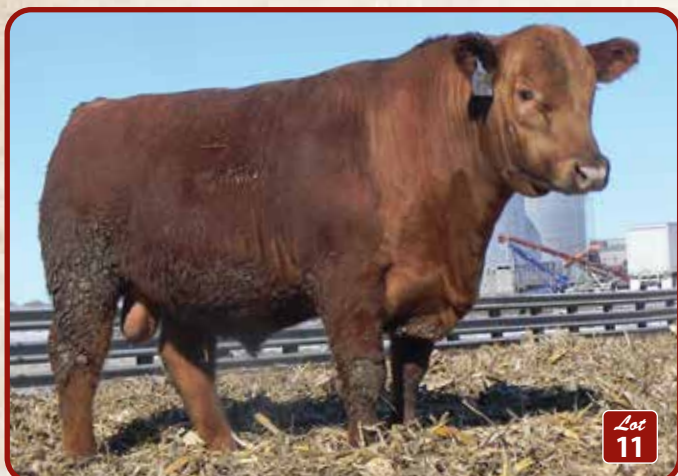
	DATA	RATIO
BW	81	100
WW	658	112
YW	1213	108
SC	39	

	EPD	TOP%	DATA
REA	0.23	30%	13.8
MARB	0.51	30%	2.84
BFAT	0.03	68%	0.27
YG	0.11	74%	—
CW	37	9%	—
ADG	0.32	5%	0.00

	ProS	HB	GM	CED	BW	WW	YW	MILK	HPG	CEM	STAY
EPD	109	56	54	10	0.0	77	128	30	11	4	19
TOP%	21%	41%	20%	82%	83%	6%	5%	16%	66%	92%	8%

**Lot
10**

We love these Game Changer sons for their depth of rib, capacity and top performance. His unique Iron Ore pedigreed dam offers diversity in most of the Red Reckoning program and posts a 106 MPPA with a 366 day Calving Interval.


Lot
11

Lot
11

KDM2C XPORTER L245

KDM2C/L245 1A 100% AR BD: 3/11/23 RAAA#4827788 BULL

REDHILL TEN X 104U 190A
LSF MEW X-PORTER 6695D
BROWN MS NEW STANDARD A7053
SIRE / KDM2C XPORTER G843
3SCC DOMAIN A163
KDM2C MINNIE D507
KDM2C ROSE B321
BASIN HOB0 0545
3SCC ZEUS T70
RRM MISS HEAVEN'S SAKE F811
DAM / 3SCC RACHEL Z200
BASIN CHEROKEE 4240
BSKF RACHEL W722
BSKF RACHEL P215

	DATA	RATIO
BW	77	90
WW	767	115
YW	1157	107
SC	38.5	

	EPD	TOP%	DATA
REA	0.25	27%	15.1
MARB	0.50	32%	3.66
BFAT	0.05	94%	0.39
YG	0.15	90%	—
CW	36	10%	—
ADG	0.26	27%	0.00

	ProS	HB	GM	CED	BW	WW	YW	MILK	HPG	CEM	STAY
EPD	133	71	62	16	-3.5	71	113	23	11	8	17
TOP%	4%	16%	10%	9%	21%	15%	19%	77%	66%	32%	20%

L245 calving ease bull is from our foundation cow line that keeps providing for us. Several great female makers behind L245; 3SCC Domain, Basin Hobo 0545, 3SCC Zeus T70. Dam has 361 day interval on 10 calves, was purchased as open heifer with foundation Rachel P215 cow.


Lot
12

Lot
12

KFRA MR CUSTER L343

KFRA/L343 1A 100% AR BD: 2/9/23 RAAA#4846724 BULL

BIEBER CL ATOMIC C218
GM ATOMIC SKY 904
GM SKY ZARA 703
SIRE / CHAPPELL GENERAL CUSTER J448
5L DEFENDER 560-30Z
CHAPPELL TAMARA E354
CHAPPELL TAMARA C329
BECKTON NEBULA P P707
BROWN PACESETTER Y7170
BROWN MS REVELATION U7748
DAM / CHAPPELL MISS MOLLY C330
LSF WALL STREET 8071U
LSF MAB MISS MOLLY X0705
LSF RR MISS MOLLY U8802

	DATA	RATIO
BW	80	99
WW	639	109
YW	1173	104
SC	36.5	

	EPD	TOP%	DATA
REA	0.36	12%	13.7
MARB	0.87	2%	5.37
BFAT	0.05	97%	0.40
YG	0.09	62%	—
CW	25	46%	—
ADG	0.29	13%	0.00

	ProS	HB	GM	CED	BW	WW	YW	MILK	HPG	CEM	STAY
EPD	122	67	55	15	-3.2	74	120	33	13	9	17
TOP%	9%	20%	19%	18%	26%	11%	11%	5%	23%	22%	20%

Here is the maternal brother to Chappell Home Run, the \$19,000 bull from Pennsylvania that scanned a 6.66 IMF and 16.11 REA! Their incredible dam's record includes: 94 ABR; 106 AWR; 101 AYR with progeny averages of 112 IMF and 107 REA! This General Custer son is a big time Herd Bull prospect!


Lot
13

Lot
13

GILCHRIST GP ALAMO 210K

STRG/210K 1A 100% AR BD: 8/25/22 RAAA#4742439 BULL

5L BOURNE 117-48A
5L ULTIMATUM 1893-03C
5L PRETTY GUN 1300-1893
SIRE / LASO ALAMO C92H
BROWN ALLIANCE X7795
LASO LANA A178C
LASO LANA T68A
LSF RHO TITONKA Z721
LSF SRR GRAND PRAIRIE 7039E
LSF COUNTESS Z2128 B4022
DAM / STAR G MS SCARLET 009H
RED FINE LINE MULBERRY 26P
LAZYJ MS SCARLET 2201-5053
SRN COPPER CAP 5053

GGP

	DATA	RATIO
BW	74	92
WW	725	107
YW	1239	99
SC	42	

	EPD	TOP%	DATA
REA	0.37	11%	15.11
MARB	0.55	24%	2.40
BFAT	0.05	94%	0.31
YG	0.12	79%	—
CW	38	8%	—
ADG	0.27	20%	3.20

	ProS	HB	GM	CED	BW	WW	YW	MILK	HPG	CEM	STAY
EPD	109	55	54	17	-2.3	74	117	26	16	8	14
TOP%	22%	43%	20%	9%	42%	10%	13%	48%	4%	32%	60%

Alamo son with a 74 lb. BW to 726 lb. WW spread and posting a 15.1 sq. inch REA scan. His dam is one of our top Grand Prairie daughters with a 103 MPPA coming from the Ms Scarlet cow family.

**Lot
14****GILCHRIST LIMITED RESERVE**

STRG/241K 1A 100% AR BD: 10/3/22 RAAA#4742405 BULL

PIE STOCKMAN 4051
 BIEBER CL STOCKMARKET E119
 BIEBER CL ADELLE 475C
SIRE / LLRA LIMIT UP H29
 KFRA STUMPY W66H
 LLRA MATTIE Y40P
 OHRR 14M MAHOGNY LASS 40P
 BIEBER ROOSEVELT W384
 BIEBER ROUGH COUNTRY A523
 BASIN DYNAMO 3016
DAM / CER COUNTRY QUEEN 680D
 5L NORSEMAN KING 2291
 LIEN RUTH 424
 LEWIS RUTH 910



	DATA	RATIO
BW	73	91
WW	644	95
YW	1265	101
SC	43	

	EPD	TOP%	DATA
REA	0.07	65%	14.53
MARB	0.71	8%	1.96
BFAT	0.05	97%	0.24
YG	0.18	95%	—
CW	26	42%	—
ADG	0.25	39%	3.88

**Lot
14**

Limited Reserve has been one of the standouts since birth. His dam is one of our top cows with a 36s day Calving Interval on 6 calves and records a 105 MPPA. This is a really solid bull with a 14.5 sq. inch REA scan

**Lot
15****GILCHRIST EMINENT RESOURCE**

STRG/222K 1A 100% AR BD: 9/9/22 RAAA#4742407 BULL

S A V RESOURCE 1441
 MRLA RELOAD 56C
 RED MRLA MISS 641Y
SIRE / RED MRLA RESOURCE 137E
 S A V HARVESTOR 0338
 MRLA MISS 4422B
 MRLA MISS 433T
 VGW NAVIGATOR 010
 3SCC NAVIGATE A42
 LCC RAC NA513
DAM / MS NAVIGATOR D120
 BHR GOLDEN BOY 854
 3SCC CHERABEL A469
 BSKF CHERABEL X789



	DATA	RATIO
BW	72	90
WW	653	96
YW	1233	98
SC	46	

	EPD	TOP%	DATA
REA	-0.04	86%	12.25
MARB	0.35	67%	1.88
BFAT	0.05	96%	0.25
YG	0.24	99%	—
CW	33	17%	—
ADG	0.24	42%	3.63

**Lot
15**

222K is the only Resource son in the offering and comes loaded with tremendous growth posting a 72 lb. BW, 653 lb. WW and 1233 lb. YW. His dam is one of our top maternal cows with a Top 5% MILK EPD.

**Lot
16****GILCHRIST DOMINANT 233K**

STRG/233K 1A 100% AR BD: 9/23/22 RAAA#4742701 BULL

BECKTON DOMINOR Z1 R610
 BECKTON DOMINOR T122 Z1
 BKT LARKABEL R038 WA
SIRE / 3SCC DOMAIN A163
 BASIN HOB0 0545
 3SCC EUCLA X723
 BSKF EUCLA U278
 BECKTON EPIC R397 K
 LSF SAGA 1040Y
 LSF MINOLA T7172 W9041
DAM / TBJR DINA 306
 BUF CRK ROMEO L081
 LSF DINA N3044 S6120
 LSF DINA J1404 N3044



	DATA	RATIO
BW	87	
WW	607	
YW	1228	
SC	43	

	EPD	TOP%	DATA
REA	0.31	18%	13.97
MARB	0.32	74%	2.08
BFAT	0.05	96%	0.30
YG	0.11	72%	—
CW	27	36%	—
ADG	0.29	12%	3.88

**Lot
16**

Lot 16 & 17 are ET brothers sired by Domain and out of Bootjack's top donor – Dina 306. These bulls are peas in a pod with nearly identical data across the board including 14 sq. inch REA measurements. The Dina 306 cow is a consistent producer with ABR 98, AWR 106, AYR 106 and average progeny REA 107! If you need 2 bulls check this pair out for consistency in your next calf crop.



Lot 17

GILCHRIST DOMINANT 232K

STRG / 232K 1A 100% AR BD: 9/21/22 RAAA#4742699 BULL

BECKTON DOMINOR Z1 R610
BECKTON DOMINOR T122 Z1
BKT LARKABEL R038 WA
SIRE / 3SCC DOMAIN A163
BASIN HOB0 0545
3SCC EUCLA X723
BSKF EUCLA U278
BECKTON EPIC R397 K
LSF SAGA 1040Y
LSF MINOLA T7172 W9041
DAM / TBJR DINA 306
BUF CRK ROMEO L081
LSF DINA N3044 S6120
LSF DINA J1404 N3044



	DATA	RATIO
BW	86	
WW	640	
YW	1225	
SC	42	

	EPD	TOP%	DATA
REA	0.20	36%	13.94
MARB	0.48	36%	1.43
BFAT	0.06	98%	0.23
YG	0.19	97%	—
CW	35	13%	—
ADG	0.29	14%	3.66

	ProS	HB	GM	CED	BW	WW	YW	MILK	HPG	CEM	STAY
EPD	104	49	56	16	-2.5	65	110	30	10	6	17
TOP%	27%	56%	18%	15%	38%	36%	24%	16%	66%	81%	24%

An ET brother to Lot 16. If you want a consistent future calf crop and need 2 bulls to do it, this would be the chance to buy both. We will sell choice with the option to take them both.



Lot 18

KFRA MR GRINDSTONE L344

KFRA / L344 1A 100% AR BD: 2/9/23 RAAA#4846824 BULL

LEACHMAN PLEDGE A282Z
HXC ALLEGIANCE 5502C
HXC 100Y
SIRE / HXC GRINDSTONE 9908G
SPUR FRANCHISE OF GARTON
HXC 605D
HXC 905W
LSF SAGA 1040Y
PIE CINCH 4126
TKP BONNE BEL 110
DAM / KFRA MS CINCH F83
BROWN ULTIMATE X7752
KFRA MS. ULTIMATE B03
KFRA MS HIGH Z620

	DATA	RATIO
BW	81	100
WW	640	109
YW	1198	107
SC	39	

	EPD	TOP%	DATA
REA	0.34	14%	15.1
MARB	0.37	63%	4.25
BFAT	0.02	59%	0.34
YG	0.05	43%	—
CW	34	14%	—
ADG	0.32	4%	0.00

	ProS	HB	GM	CED	BW	WW	YW	MILK	HPG	CEM	STAY
EPD	90	50	40	10	-0.4	79	130	30	12	5	15
TOP%	50%	52%	47%	82%	78%	4%	4%	16%	39%	82%	42%

The Grindstone sons have excelled in the Development Pen with rapid growth and super dispositions. L344's dam is a solid 104 MPPA with a very desirable 363 day Calving Interval.



Lot 19

GILCHRIST ELEVATED ENDURANCE

STRG / 221K 1A 100% AR BD: 9/7/22 RAAA#4742419 BULL

SCHULER NEBULA P707 0050X
SCHULER ENDURANCE 2101Z
SOR FIREFLY DYNATREND 0431X
SIRE / GILCHRIST HIGH ENDURANCE
BIEBER ROUGH RIDER 10712
BIEBER YOD 340X
OLC YOD R387
GMRA TRILOGY 0226
GMRA TESLA 6214
GMRA ANGIE ROSE 448
DAM / GMRA LAKOTA 988G
BIEBER GOLDBARY379
GMRA LAKOTA 4111
GMRA LAKOTA 0103



	DATA	RATIO
BW	91	113
WW	668	98
YW	1297	103
SC	41	

	EPD	TOP%	DATA
REA	0.33	15%	14.62
MARB	0.40	54%	2.94
BFAT	0.00	15%	0.27
YG	0.00	18%	—
CW	35	13%	—
ADG	0.30	9%	3.92

	ProS	HB	GM	CED	BW	WW	YW	MILK	HPG	CEM	STAY
EPD	119	78	41	11	-0.1	83	131	24	13	6	19
TOP%	11%	8%	45%	80%	82%	2%	3%	64%	22%	78%	9%

A son of the \$27,500 2017 Red Alliance sale topper — we still love these High Endurance calves. 14.6 sq. inch REA scan with a 119 IMF ratio — if you want to add carcass to your program, this bull will do it.



2024 RED RECKONING SALE



**Lot
20**

GILCHRIST EMINENT ENDURANCE

STRG/207K 1A 100% AR BD: 8/21/22 RAAA#4742425 BULL

SCHULER NEBULA P707 0050X
SCHULER ENDURANCE 2101Z
SOR FIREFLY DYNATREND 0431X
SIRE / GILCHRIST HIGH ENDURANCE
BIEBER ROUGH RIDER 10712
BIEBER YOD 340X
OLC YOD R387

LSF TAKEOVER 9943W
H2R PROFITBUILDER B403
BROWN MS P707 Y6674
DAM / SST RED ROSE E4 - G5
BIEBER DEEP END B597
SST ROSALINA B9-E4
SST ROSALINA U14-B9



	DATA	RATIO
BW	75	94
WW	744	110
YW	1280	102
SC	45	

	EPD	TOP%	DATA
REA	0.26	25%	14.14
MARB	0.42	49%	1.69
BFAT	0.02	44%	0.21
YG	0.10	71%	—
CW	45	3%	—
ADG	0.36	1%	3.34



	ProS	HB	GM	CED	BW	WW	YW	MILK	HPG	CEM	STAY
EPD	133	87	46	14	0.1	98	156	23	13	9	18
TOP%	4%	4%	33%	39%	84%	1%	1%	72%	20%	15%	12%

This High Endurance son has been a standout since he was a young calf. His dam is one of our top females from Tony Schuler of Minnesota. If you sell calves at weaning, check out his 75 lb. BW to 744 lb. WW plus he ranks in the Top 4% ProS, 4% HB, 1% WW, YW & ADG. 207K is a definite herd bull prospect with a dam posting a 345 day Calving Interval and a 102 MPPA!

**Lot
D**

3SCC DOMAIN A163

3SCC/A163 1A 100% AR BD: 3/26/13 RAAA#1619642 SEMEN

BECKTON DOMINOR ZC M919
BECKTON DOMINOR Z1 R610
BECKTON SIERRA K557 LO
SIRE / BECKTON DOMINOR T122 Z1
BECKTON WARHAWK N560
BKT LARKABEL R038 WA
BECKTON LARKABEL N769 HR

BASIN HOB0 79E
BASIN HOB0 0545
BASIN ERICA 330E
DAM / 3SCC EUCLA X723
BASIN EXT 1925
BSKF EUCLA U278
BSKF EUCLA P297

**Selling
3 Straws**



	DATA	RATIO
BW	87	98
WW	655	109
YW	1233	113
SC	39.17	

	EPD	TOP%	DATA
REA	0.23	32%	14.89
MARB	0.59	22%	4.25
BFAT	0.06	95%	0.44
YG	0.17	87%	—
CW	34	22%	—
ADG	0.27	31%	3.61



	ProS	HB	GM	CED	BW	WW	YW	MILK	HPG	CEM	STAY
EPD	112	53	58	15	-1.5	67	110	27	12	4	18
TOP%	21%	45%	19%	26%	55%	37%	33%	43%	44%	92%	15%

Offering 3 straws of the incomparable Red Angus bull that makes sons and daughters with added-value no matter how you analyze them.

**Lot
E**

CHAPPELL HOME RUN H418

CEE/H418 1A 100% AR BD: 1/19/20 RAAA#4250075 SEMEN

BROWN JYJ REDEMPTION Y1334
FEDDES SILVER BOW B226
FEDDES LAKINA Y17
SIRE / FEDDES BRUNSWICK D202
FEDDES BIG SKY R9
FEDDES LARKABU X21
FEDDES LARKABU 827

BECKTON NEBULA P P707
BROWN PACESETTER Y7170
BROWN MS REVELATION U7748
DAM / CHAPPELL MISS MOLLY C330
LSF WALL STREET 8071U
LSF MAB MISS MOLLY X0705
LSF RR MISS MOLLY U8802

**Selling
5 or 10
Straws**



	DATA	RATIO
BW	79	104
WW	737	114
YW	1335	110
SC		

	EPD	TOP%	DATA
REA	0.83	2%	16.11
MARB	0.84	4%	6.66
BFAT	0.03	71%	0.36
YG	-0.09	7%	—
CW	33	24%	—
ADG	0.29	19%	3.74



	ProS	HB	GM	CED	BW	WW	YW	MILK	HPG	CEM	STAY
EPD	162	95	66	15	-1.8	76	123	33	11	9	22
TOP%	2%	3%	12%	24%	50%	13%	14%	8%	59%	17%	1%

The Brunswick son that offers more EPD bang to the equation with loads of rib design and mass than most Red Angus bulls on the scene today. He offers solid feet and an incredibly productive dam to back him.



BIEBER CL ATOMIC C218, SIRE

Lot 21

KFRA MR ATOMIC L322

KFRA / L322 1A 100% AR BD: 2/5/23 RAAA#4846958 BULL

ANDRAS IN FOCUS B175
ANDRAS FUSION R236
ANDRAS BELLE B167
SIRE / BIEBER CL ATOMIC C218
HUST CHIEF SEQUOYA R336
BIEBER DATELINE 308Y
BASIN ROSE 7127
LSF NIGHT CALVER 9921W
LSF RHO NIGHT FOCUS 76B
RHODES BN MINERVA Z532
DAM / KFRA MS NIGHT FOCUS J62
JEFFRIES CHECOTAH 817C
KFRA MS CHECOTA G102
KFRA GRAND STATEMENT AS70

	DATA	RATIO
BW	78	96
WW	623	106
YW	1075	96
SC	36	

	EPD	TOP%	DATA
REA	0.05	69%	11.8
MARB	0.62	15%	3.81
BFAT	0.03	69%	0.29
YG	0.14	84%	—
CW	28	35%	—
ADG	0.28	18%	0.00

	ProS	HB	GM	CED	BW	WW	YW	MILK	HPG	CEM	STAY
EPD	95	44	51	14	-3.1	74	118	28	12	9	11
TOP%	42%	64%	26%	27%	26%	10%	12%	28%	39%	12%	86%

This bull would be a great prospect to use on heifers with his Atomic X Night Focus heritage. His dam was a first calf heifer achieving an MPPA of 102 on her first attempt.



Lot 22

Lot 22

KDM2C WEIGH OUT L244

KDM2C / L244 1A 100% AR BD: 3/11/23 RAAA#4827796 BULL

5L OUT IN FRONT 1701-457B
JACOBSON WEIGHT OUT 6171
JACOBSON HEIDI 2099
SIRE / JACOBSON WEIGH OUT 8041
5L INDEPENDENCE 560-298Y
JACOBSON COLLEAN 4110
HRR COLLEEN 429
VGW NAVIGATOR 010
3SCC TRACKER Z205
MESSMER GINNIE V536
DAM / KDM2C PRINCESS RACHELB351
RRM RED CHIEF 9405
BSKF RACHEL P215
BSKF RED RACHEL J1175

	DATA	RATIO
BW	85	100
WW	781	117
YW		
SC	35	

	EPD	TOP%	DATA
REA	-0.02	83%	
MARB	0.42	49%	
BFAT	0.02	53%	
YG	0.09	66%	—
CW	18	72%	—
ADG	0.29	14%	0.00

	ProS	HB	GM	CED	BW	WW	YW	MILK	HPG	CEM	STAY
EPD	93	56	38	16	-3.2	66	112	29	11	9	15
TOP%	45%	41%	52%	9%	26%	30%	21%	23%	58%	13%	48%

KDM2C Weigh Out L244 is out of proven parentage. Jacobson Weigh Out has made several great females for us. L244 Dam from our foundation Rachel cow line. We have several offspring from foundation P215 Rachel. L244 can be used for calving ease, but will still provide growth and performance.



**Lot
23****KFRA MR ENDURANCE L546**

KFRA/L546 1A 100% AR BD: 2/18/23 RAAA#4846748 BULL

SCHULER NEBULA P707 0050X
SCHULER ENDURANCE 2101Z
SOR FIREFLY DYNATREND 0431X
SIRE / GILCHRIST HIGH ENDURANCE
BIEBER ROUGH RIDER 10712

BIEBER YOD 340X

OLC YOD R387

BECKTON NEBULA P P707

HXC BIG IRON 0024X

HXC 825U

DAM / MS BIG IRON C43

LCHMAN.ABOVEHEAVEN1018F

KFRA HEAVEN ABOVE 108

KFRA RED RUBY 4108

	DATA	RATIO
BW	79	98
WW	633	108
YW	1185	106
SC	38	

	EPD	TOP%	DATA
REA	0.26	25%	14.2
MARB	0.37	63%	3.93
BFAT	0.01	39%	0.32
YG	0.07	49%	—
CW	37	10%	—
ADG	0.30	8%	0.00

	ProS	HB	GM	CED	BW	WW	YW	MILK	HPG	CEM	STAY
EPD	100	58	42	12	-0.2	78	127	24	9	8	16
TOP%	34%	37%	41%	56%	80%	5%	5%	71%	86%	28%	29%

**GILCHRIST HIGH ENDURANCE, SIRE**

High Endurance was the 2017 Red Alliance \$27,500 sale topper and has proven to not only stand the test of time but excel for growth, style and carcass quality year after year. L546's dam is a prime 8 year old with a 361 day Calving Interval.

**Lot
24****KDM2C ATOMIC L215**

KDM2C/L215 1A 100% AR BD: 2/11/23 RAAA#4827800 BULL

ANDRAS IN FOCUS B175
ANDRAS FUSION R236
ANDRAS BELLE B167
SIRE / BIEBER CL ATOMIC C218
HUST CHIEF SEQUOYA R336

BIEBER DATELINE 308Y

BASIN ROSE 7127

5L ADVOCATE 817-14W

5L DEFENDER 560-30Z

5L BLACK ADINA 525-560

DAM / JACOBSON HEIDI 4114

RED FINE LINE MULBERRY 26P

JACOBSON HEIDI 0026

JACOBSON HEIDI P58

	DATA	RATIO
BW	65	76
WW	587	88
YW	1103	102
SC	35.5	

	EPD	TOP%	DATA
REA	0.05	69%	11.4
MARB	0.53	27%	2.82
BFAT	0.00	18%	0.30
YG	0.04	36%	—
CW	21	62%	—
ADG	0.28	15%	0.00

	ProS	HB	GM	CED	BW	WW	YW	MILK	HPG	CEM	STAY
EPD	79	34	45	18	-5.2	61	106	28	10	11	12
TOP%	68%	83%	35%	3%	5%	52%	33%	28%	69%	3%	81%

**BIEBER CL ATOMIC C218, SIRE**

Good choice for calving ease bull or all around herd bull. Dam has a 359 day calving interval on 8 calves. Dam continues to be top producing female in our herd. A maternal sister G841 raised a top open heifer for us last year. Atomic sire for great females, top calving ease EPDS, but still high growth and Grid master EPDS.

**Lot
25****KFRA MR RELENTLESS L315**

KFRA/L315 1A 100% AR BD: 2/5/23 RAAA#4846734 BULL

BIEBER HARD DRIVE Y120
BIEBER DRIVEN C540
BIEBER JOAN 309Y
SIRE / STRA RELENTLESS
LARSON SUN KING 016

STRA CHEREBAL 305

STRA MISS TRACKER 141

VGW NAVIGATOR 010

3SCC NAVIGATE A42

LCC RAC NA513

DAM / MS NAVIGATE C183

HXC JACKHAMMER 8800U

KFRA DOLLY YT92

KFRA RED CHARM T923

	DATA	RATIO
BW	80	99
WW	551	94
YW	1045	93
SC	35	

	EPD	TOP%	DATA
REA	-0.19	97%	12.6
MARB	0.80	4%	3.31
BFAT	0.04	88%	0.27
YG	0.17	92%	—
CW	10	93%	—
ADG	0.20	70%	0.00

	ProS	HB	GM	CED	BW	WW	YW	MILK	HPG	CEM	STAY
EPD	140	91	49	13	-4.0	57	89	34	18	7	17
TOP%	2%	2%	28%	48%	15%	65%	68%	3%	7%	57%	18%

**STRA RELENTLESS, SIRE**

Top 2% ProS & HB another incredible dam with a tight 362 day Calving Interval and a 101 MPPA.



LSF SRR PRIME PLUS 0111H, SIRE

Lot 26

KFRA MR PRIME PLUS L536

KFRA/L536 1A 100% AR BD: 2/15/23 RAAA#4846786 BULL

5L BOURNE 117-48A
LSF SRR RANCHER 7190E
LSF SRR RAINDANCE C5237
SIRE / LSF SRR PRIME PLUS 0111H
LSF TAKEOVER 9943W
LSF SRR DELLA C5457
LSF BLACKBIRD N3080 X0406
RED BAR-E-L RIBEYE 103R
RED COCKBURN RIBEYE 308U
RED WILBAR CORA 443P
DAM / KFRA MS RIBEYE E110
HAMMEL ROMEO 212T-ET
3SCC KAREN W752
3SCC MISS KAREN P98

	DATA	RATIO
BW	80	99
WW	666	114
YW	1222	109
SC	40.5	

	EPD	TOP%	DATA
REA	0.08	63%	15.0
MARB	0.87	2%	4.12
BFAT	0.05	94%	0.35
YG	0.14	86%	—
CW	21	63%	—
ADG	0.25	37%	0.00

	ProS	HB	GM	CED	BW	WW	YW	MILK	HPG	CEM	STAY
EPD	118	56	62	13	-1.8	71	111	30	14	7	14
TOP%	12%	41%	10%	45%	51%	16%	23%	16%	14%	45%	62%

Prime Plus son excelling with a 114 WW ratio and a 40.5 cm scrotal measurement. His dam is a top Ribeye daughter with a 104 MPPA and a 361 Calving Interval.



Lot F

Lot F

RED MRLA RESOURCE 137E

MRLA/137E 1 100% AR BD: 2/1/17 RAAA#3897537 SEMEN

RITO 707 OF IDEAL 3407 7075
S A V RESOURCE 1441
S A V BLACKCAP MAY 4136
SIRE / MRLA RELOAD 56C
RED BAR-E-L WARDEN 144W
RED MRLA MISS 641Y
RED MRLA 793R
S A V HERITAGE 6295
S A V HARVESTOR 0338
S A V EMBLYNETTE 7749
DAM / MRLA MISS 4422B
RED MCRAE'S MANN 43R
MRLA MISS 433T
GARA ERICA 21M

Selling 11 Straws

	DATA	RATIO
BW		
WW		
YW		
SC		

	EPD	TOP%	DATA
REA	0.09	56%	
MARB	0.13	93%	
BFAT	0.05	89%	
YG	0.22	95%	—
CW	39	14%	—
ADG	0.26	33%	

	ProS	HB	GM	CED	BW	WW	YW	MILK	HPG	CEM	STAY
EPD	81	49	33	10	2.0	57	99	22	18	10	9
TOP%	58%	53%	56%	83%	95%	70%	53%	76%	2%	14%	93%

We have loved the performance of the Resource progeny and simply don't have the cow power or time to use all the semen in our 3 tanks so here it is! Help yourself to a great performance sire. Offering 11 straws.



Lot G

Lot G

GILCHRIST HIGH ENDURANCE

STRG/567C 1A 100% AR BD: 9/5/15 RAAA#3530270 SEMEN

BECKTON NEBULA P P707
SCHULER NEBULA P707 0050X
SOR SHSTALDY MRED 1100L
SIRE / SCHULER ENDURANCE 2101Z
SCHULER DYNATREND 8144U
SOR FIREFLY DYNATREND 0431X
SOR FIREFLY ENT 5022R
BASIN TREND SETTER 6074
BIEBER ROUGH RIDER 10712
BIEBER ADELLE 8958
DAM / BIEBER YOD 340X
OLC DAYMAKER J293
OLC YOD R387
BIEBER YOD H701

Selling 10 Straws

GGP

	DATA	RATIO
BW	79	102
WW	664	111
YW		
SC		

	EPD	TOP%	DATA
REA	0.41	14%	12.66
MARB	0.37	59%	1.39
BFAT	0.02	42%	0.18
YG	0.04	35%	—
CW	42	10%	—
ADG	0.32	9%	0.00

	ProS	HB	GM	CED	BW	WW	YW	MILK	HPG	CEM	STAY
EPD	122	82	40	13	-0.4	86	138	25	11	10	19
TOP%	13%	9%	43%	43%	73%	4%	5%	61%	63%	13%	10%

The \$27,500 syndicated Red Alliance bull that has proven to be one of the best we have used in our 51 year history in the breed. This bull is deceased with very limited semen left – if you haven't tried him, you owe it to your program to get your hand in the air on this one! Offering 10 straws on this true Red Angus sensation.

**Lot
27****GILCHRIST LIMITED ATMOSPHERE**

STRG/239K 1A 100% AR BD: 9/28/22 RAAA#4742435 BULL

SIRE / LLRA LIMIT UP H29**DAM / STAR G ROUGH RUTH 021H**

	DATA	RATIO
BW	79	99
WW	677	100
YW	1294	103
SC	44	

	EPD	TOP%	DATA
REA	0.33	15%	12.55
MARB	0.61	16%	3.43
BFAT	0.02	55%	0.22
YG	0.10	67%	—
CW	46	2%	—
ADG	0.33	3%	3.84

	ProS	HB	GM	CED	BW	WW	YW	MILK	HPG	CEM	STAY
EPD	136	68	68	12	-0.5	79	131	27	13	9	17
TOP%	3%	19%	6%	57%	76%	4%	3%	36%	27%	19%	18%



A son of the \$14,500 Limit Up bull that has proven to be a very unique bull with extreme calving ease and a lot of growth. We owned Limit Up with Sonstegard Cattle of Minnesota where he sired their top weaning bull calf in over 30 years at a whopping 931 lbs!

**Lot
28****KDM2C STOCKTRADER L206**

KDM2C/L206 1A 100% AR BD: 2/2/23 RAAA#4827920 BULL

SIRE / KFRA H2 MR STOCKMARKET**DAM / KDM2C JENLINE J054**

	DATA	RATIO
BW	75	88
WW	665	100
YW	1118	103
SC	37	

	EPD	TOP%	DATA
REA	0.10	58%	14.2
MARB	0.87	2%	4.86
BFAT	0.04	90%	0.38
YG	0.06	48%	—
CW	6	96%	—
ADG	0.22	57%	0.00

	ProS	HB	GM	CED	BW	WW	YW	MILK	HPG	CEM	STAY
EPD	107	63	44	13	-2.5	60	95	28	14	8	15
TOP%	24%	28%	37%	42%	38%	56%	57%	34%	14%	23%	46%



BIEBER CL STOCKMARKET E119, GRANDSIRE

Calving ease bull with unique look and edge since birth. Has growth and performance from Stockmarket #119 and from proven genetic line maternal/bloodlines. Genline dam and grandam have produced growth type progeny. High Pro S, HB and GM scores.

**Lot
29****GILCHRIST RESOLUTION 238K**

STRG/238K 1A 100% AR BD: 9/25/22 RAAA#4880166 BULL

SIRE / RED BCC BRYLOR OTM RESOLUTIO**DAM / RED MCRAE'S REBA 49W**

	DATA	RATIO
BW	104	
WW	721	
YW	1218	
SC	47	

	EPD	TOP%	DATA
REA	0.11	56%	14.0
MARB	0.26	86%	1.73
BFAT	0.02	49%	0.19
YG	0.05	42%	—
CW	19	70%	—
ADG	0.20	69%	3.10

	ProS	HB	GM	CED	BW	WW	YW	MILK	HPG	CEM	STAY
EPD	94	80	14	11	0.5	66	99	26	12	8	18
TOP%	44%	7%	92%	71%	89%	30%	48%	52%	39%	29%	15%



RED MCRAE'S REBA 49W, DAM

One of the first Resolution sons to sell and from the Brylor Ranch's famed Reba 49W cow. This bull offers complete outcross to any other bulls we have offered in the Red Reckoning Auctions of the past. Don't miss his 721 lb. WW and 1218 lb. YW — lots of growth in this rascal.

**Lot 30****GILCHRIST BLOOD BROTHER 236K**

STRG/236K 1A 100% AR BD: 9/23/22 RAAA#4742789 BULL

PZC TMAS FIRESTORM 1800 ET
 ROJAS RIOJA 6052
 SIX MILE LAKOTA 112Y
SIRE / DUFF RED BLOOD 18114
 RED CROWFOOT OLE'S OSCAR
 DUFF JUANADA 927K 15124
 O C C JUANADA 927K
 MESSMER PACKER S008
 LSF BOXED BEEF 9063W
 LSF LARKABA 59J R5195
DAM / TBJR MISS SENSATION 407
 BASIN FUTURE DIRECTION 7303
 SRR MISS SENSATION 12
 SRR MISS SENSATION 9124-633

	DATA	RATIO
BW	79	
WW	607	
YW	1184	
SC	42	

	EPD	TOP%	DATA
REA	0.36	12%	13.27
MARB	0.68	10%	2.66
BFAT	0.01	28%	0.19
YG	-0.07	5%	—
CW	15	81%	—
ADG	0.17	86%	3.61

	ProS	HB	GM	CED	BW	WW	YW	MILK	HPG	CEM	STAY
EPD	77	35	42	12	-2.8	59	86	30	13	5	11
TOP%	72%	81%	43%	63%	32%	58%	75%	16%	25%	85%	88%

The only Red Blood son in the offering with a lot of style and built like a brick outhouse. Dense muscled, dark red and with a baby doll attitude — he will be well accepted sale day.

**Lot 31****KFRA MR GAME CHG L541**

KFRA/L541 1A 100% AR BD: 2/18/23 RAAA#4846848 BULL

LSF TAKEOVER 9943W
 H2R PROFITBUILDER B403
 BROWN MS P707 Y6674
SIRE / GMRA GAME CHANGER 8270F
 GMRA LARAMIE 5110
 GMRA PRIDSTOM 069
 GMRA PRIDSTOM 727
 BECKTON DOMINOR T122 Z1
 3SCC DOMAIN A163
 3SCC EUCLA Y723
DAM / 3SCC SISKI G51
 ANDRAS THUNDER R196
 3SCC SISKI D322
 3SCC SISKI T283

	DATA	RATIO
BW	82	101
WW	733	125
YW	1326	118
SC	38.5	

	EPD	TOP%	DATA
REA	0.34	14%	14.8
MARB	0.54	25%	2.60
BFAT	0.03	75%	0.23
YG	0.09	62%	—
CW	37	9%	—
ADG	0.32	4%	0.00

	ProS	HB	GM	CED	BW	WW	YW	MILK	HPG	CEM	STAY
EPD	118	60	58	10	1.1	85	136	32	12	3	18
TOP%	12%	32%	15%	81%	93%	1%	2%	8%	43%	97%	9%

We can't say enough about these Game Changer sons! Check this bull out with a 733 lb. WW / 125 ratio and from a top Domain daughter with a 107 MPPA and a 362 Calving Interval.

**Lot 32****KDM2C LAZZER L222**

KDM2C/L222 1A 100% AR BD: 2/16/23 RAAA#4827896 BULL

MYTTY IN FOCUS
 ANDRAS IN FOCUS B152
 ANDRAS PINETA B91
SIRE / 3SCC LASER FOCUSED C171
 3SCC DOMINOR W338
 3SCC HANNAH Z100
 3SCC MISS ET HANNAHHOBB P103
 RED SOO LINE POWER EYE 161X
 KJHT POWER TAKE OFF
 SRA PAINTBUCKET
DAM / KDM2C IZZY H927
 BIEBER MAKIN HAY 9913
 LRA MS MAKIN HAY 207
 LRA MS SAKIC 904

	DATA	RATIO
BW	103	121
WW	724	109
YW	1139	105
SC	32.5	

	EPD	TOP%	DATA
REA	0.05	69%	11.8
MARB	0.46	40%	2.43
BFAT	0.04	87%	0.23
YG	0.19	96%	—
CW	35	13%	—
ADG	0.32	4%	0.00

	ProS	HB	GM	CED	BW	WW	YW	MILK	HPG	CEM	STAY
EPD	120	69	52	11	1.9	77	129	27	15	6	17
TOP%	10%	18%	24%	77%	97%	6%	4%	43%	7%	81%	18%

If you're looking for growth and performance in a bigger bull, Lazzer L222 is worth a look. He is taking after his KJHT Power Take Off dam. KDM2C Izzy is now taking over for her Bieber Makin' Hay Dam that raised a really great progeny for us. (Full maternal sib to L222 dam sold in Red Reckling to Wynn's in KY). KDM2C Lazzer L222 can add pounds to your calves or make great females.

**Lot
33****KFRA MR GRINDSTONE L513**

KFRA/L513 1A 100% AR BD: 2/9/23 RAAA#4846752 BULL

LEACHMAN PLEDGE A282Z
HXC ALLEGIANCE 5502C
HXC 100Y
SIRE / HXC GRINDSTONE 9908G
SPUR FRANCHISE OF GARTON
HXC 605D
HXC 905W
LCC ABOVE & BEYOND 1300J
HLH OUTER LIMIT 851 4073
HLH LIGHTN LASS 119 851
DAM / ERIC RAPUNZEL B3
BROWN COMMITMENT S7206
ERIC MISS PAIGE Y32
NELS INGRID 5W

	DATA	RATIO
BW	81	100
WW	593	101
YW	1090	97
SC	37	

	EPD	TOP%	DATA
REA	0.21	34%	12.6
MARB	0.50	32%	2.65
BFAT	0.02	57%	0.30
YG	0.08	56%	—
CW	30	25%	—
ADG	0.28	19%	0.00

**Lot
33**

	ProS	HB	GM	CED	BW	WW	YW	MILK	HPG	CEM	STAY
EPD	88	44	44	10	-1.5	68	112	35	10	6	16
TOP%	53%	65%	38%	85%	58%	23%	20%	1%	71%	72%	39%

We talk a lot about the cows behind this great pen of bulls and this one certainly deserves accolades, posting a 109 MPPA and a 357 Calving Interval with a ABR 98/AWR 110 and AYR 111 at nine years of age!

**Lot
34****KDM2C FIFTH SENSE L216**

KDM2C/L216 1A 100% AR BD: 2/11/23 RAAA#4827852 BULL

C-T DKK DUKE 1100
RUST BULL 31B
BKT LARKEISA M288 CK
SIRE / SIX MILE FIFTH SENSE 43F
RED SIX MILE RAWHIDE 222X
RED SIX MILE MINERVA 584B
RED SIX MILE MINERVA 3Y
RED RMJ REDMAN 1T
RED LAZY MC CC DETOUR 2W
RED LAZY MC BESS 12S
DAM / KDM2C DETOUR F807
RED SIX MILE SAKIC 832S
LRA MS SAKIC 208
LRA MS DREAM VACTION 803

	DATA	RATIO
BW	82	96
WW	653	98
YW	820	76
SC	36	

	EPD	TOP%	DATA
REA	0.13	51%	11.6
MARB	0.22	92%	2.01
BFAT	0.04	85%	0.27
YG	0.10	69%	—
CW	19	69%	—
ADG	0.21	65%	0.00

**SIX MILE FIFTH SENSE 43F, SIRE**

	ProS	HB	GM	CED	BW	WW	YW	MILK	HPG	CEM	STAY
EPD	73	60	13	13	-2.9	66	99	27	10	8	15
TOP%	76%	33%	92%	51%	31%	32%	48%	44%	79%	23%	53%

KDM2C Fifth Sense L216 is a bull that stood out early with style, width and dimension like his dam. Dam is deep body broody female. KDM2C Detour F807 has a 358 day calving interval. KDM2C Fifth Sense has the making of an all round herd bull.

**Lot
35****WDRR REFORMATION L243**

WDRR/L243 1A 100% AR BD: 3/11/23 RAAA#4829320 BULL

BIEBER ROLLIN DEEP Y118
WEBER REFORM 618
BJF LANA'S EQUAL 8021U
SIRE / WEBR REFORM 85H
WEBR DOC HOLLIDAY 2N
WEBR DAISY 1209
PRESSER'S DAISY 201
LCHMN NONE HEAVIER1127D
LEACHMAN END CUT 1383G
PARK VICTORIA C233
DAM / WDRR NELLY 1604
4L SUPER VISION R2292
PFFR MS NELLIE 740
PFFR MS NELLY 3101

	DATA	RATIO
BW	81	102
WW	617	102
YW	1151	
SC	37	

	EPD	TOP%	DATA
REA	0.01	77%	11.7
MARB	0.23	91%	3.18
BFAT	0.02	48%	0.29
YG	0.15	87%	—
CW	34	14%	—
ADG	0.27	24%	0.00

**WEBR REFORM 85H, SIRE**

	ProS	HB	GM	CED	BW	WW	YW	MILK	HPG	CEM	STAY
EPD	100	74	27	9	1.7	69	111	29	10	7	20
TOP%	33%	12%	74%	94%	96%	22%	22%	25%	83%	57%	4%

WDDR Reformation is WEBR Reform 85H son with lots of style, look like his sire. He also displays great disposition like 85H. Dam has produced maternal brothers with growth and performance. She has 356 day interval on 6 calves.


WEBER REFORM 618, SIRE OF LOT H
**Lot
H**
WEBR REFORM 85H
WEBR/85H 1A 100% AR BD: 2/18/20 RAAA#4302135 SEMEN

BIEBER ROOSEVELT W384
BIEBER ROLLIN DEEP Y118
BIEBER TILLY 399W
SIRE / WEBER REFORM 618
BJF 602S
BJF LANA'S EQUAL 8021U
SBCC EQUAL LAND
MLK CRK CUB 722
WEBR DOC HOLLIDAY 2N
WEBR MS DOLLY 1L
DAM / WEBR DAISY 1209
BJR JR 107
PRESSER'S DAISY 201
PRESSER'S DAISY

**Selling
10 Straws**

	DATA	RATIO
BW	87	102
WW	808	116
YW	1374	115
SC		

	EPD	TOP%	DATA
REA	0.05	64%	12.89
MARB	0.34	64%	3.64
BFAT	0.03	72%	0.39
YG	0.26	98%	—
CW	55	3%	—
ADG	0.34	6%	3.54

	ProS	HB	GM	CED	BW	WW	YW	MILK	HPG	CEM	STAY
EPD	123	71	52	9	1.6	76	130	31	13	7	19
TOP%	13%	18%	25%	85%	93%	13%	8%	15%	31%	54%	10%

We purchased WEBR Reform to add growth, performance, length and bone to the cows we have. 85H has great disposition after the first two years on pasture. Works great on moderate frame females and cows with high calving ease EPDs.


**Lot
I**
**Lot
I**
GILCHRIST ROYAL PEACOCK
STRG/113J 1A 100% AR BD: 8/22/21 RAAA#4565375 SEMEN

SCHULER NEBULA P707 0050X
SCHULER ENDURANCE 2101Z
SOR FIREFLY DYNATREND 0431X
SIRE / GILCHRIST HIGH ENDURANCE
BIEBER ROUGH RIDER 10712
BIEBER YOD 340X
OLC YOD R387
LACY GOLD BAR 8123
BIEBER HARD DRIVE Y120
BIEBER LAURA 158W
DAM / VF FLO MARIE 1650-245
LARSON SUN KING 016
LARSON FLO-MARIE 245-369
LARSON FLO-MARIE 369-18

**Selling
10 Straws**

	DATA	RATIO
BW	87	
WW	727	
YW	1292	
SC		

	EPD	TOP%	DATA
REA	0.78	3%	17.47
MARB	0.49	37%	2.21
BFAT	0.00	22%	0.28
YG	-0.08	7%	—
CW	47	6%	—
ADG	0.35	4%	3.53

	ProS	HB	GM	CED	BW	WW	YW	MILK	HPG	CEM	STAY
EPD	127	60	67	14	1.0	89	145	27	15	8	15
TOP%	11%	35%	11%	36%	89%	2%	2%	43%	12%	32%	46%

After 51 years of producing Red Angus cattle, this bull is probably the most complete that we have ever turned out. If you like style, performance and EPD numbers, this is the bull for you. Offering 10 straws of semen on this future superstar.


**Lot
J**
**Lot
J**
BADLANDS OPPORTUNITY 53Y
CEY/53Y 1A 100% AR BD: 2/18/11 RAAA#1455307 SEMEN

BECKTON LANCER F442 T
HXC HEMI 4400P
HXC 701G
SIRE / HXC JACKHAMMER 8800U
BECKTON JULIAN GG B571
HXC JOLENE 301N
HXC JAYLO LB136
RED BRYLOR NEW TREND 22
BADLANDS PFFR NEW DESIGN 347
BADLANDS CEDAR 922
DAM / BADLANDS MEDORA 7S
BJR THE DUKE 502-5176
BADLANDS MEDORA 440
GSP ULTRA LADY 802

**Selling
20 Straws**

	DATA	RATIO
BW	72	
WW	898	
YW	1466	
SC		

	EPD	TOP%	DATA
REA	0.40	14%	15.84
MARB	0.51	33%	3.86
BFAT	0.05	90%	0.42
YG	0.16	82%	—
CW	48	5%	—
ADG	0.39	1%	3.54

	ProS	HB	GM	CED	BW	WW	YW	MILK	HPG	CEM	STAY
EPD	29	-17	46	10	3.3	101	164	19	12	6	5
TOP%	96%	99%	34%	77%	98%	1%	1%	91%	39%	73%	99%

When we bought this bull in 2012, he was top 1% in WW, YW & ADG. Twelve years later, he is still in the top 1% of the breed for WW, YW & ADG with accuracies of .79! Our contending bidder was Genex – goes to show the studs don't always end up with the best ones.

**Lot
36****KFRA MR ATOMIC L340**

KFRA / L340 1A 100% AR BD: 2/9/23 RAAA#4846932 BULL

ANDRAS IN FOCUS B175
ANDRAS FUSION R236
ANDRAS BELLE B167
SIRE / BIEBER CL ATOMIC C218
HUST CHIEF SEQUOYA R336
BIEBER DATELINE 308Y
BASIN ROSE 7127
LEACHMAN PLEDGE A282Z
HXC DECLARATION 5504C
HXC190Y
DAM / KFRA MS DECLARATION J67
KOESTER CHIVAS 005
3SCC CHERABEL A15
3SCC CHERABEL Y832

	DATA	RATIO
BW	83	103
WW	642	109
YW	1176	105
SC	37.5	

	EPD	TOP%	DATA
REA	0.11	56%	12.6
MARB	0.50	32%	3.20
BFAT	0.01	28%	0.31
YG	0.09	66%	—
CW	36	12%	—
ADG	0.34	2%	0.00

	ProS	HB	GM	CED	BW	WW	YW	MILK	HPG	CEM	STAY
EPD	92	39	53	13	-1.3	81	135	26	11	9	13
TOP%	46%	73%	22%	41%	61%	2%	2%	48%	58%	19%	76%

**BIEBER CL ATOMIC C218, SIRE**

An Atomic X Declaration son that would work on heifers. His dam was a first calf heifer that did everything right with a 76 lb. BW and a 642 lb. WW to earn a 104 MPPA.

**Lot
37****KFRA MR ENERGIZE L529**

KFRA / L529 1A 100% AR BD: 2/13/23 RAAA#4846830 BULL

ANDRAS FUSION R236
BIEBER CL ATOMIC C218
BIEBER DATELINE 308Y
SIRE / BIEBER CL ENERGIZE F121
BIEBER HARD DRIVE Y120
BIEBER CL ADELLE 575D
BIEBER ADELLE 297Y
PARINGA IRON ORE E27
BROWN GOLD MINE A7610
BROWN MS 17P Y7699
DAM / KFRA MS GOLD F101
3SCC KODIAK U83
KFRA MS. KODIAK X36
KFRA RANDA 6336

	DATA	RATIO
BW	81	100
WW	630	107
YW	1202	107
SC	35.5	

	EPD	TOP%	DATA
REA	0.20	36%	14.0
MARB	0.56	22%	3.99
BFAT	0.03	68%	0.30
YG	0.11	74%	—
CW	35	13%	—
ADG	0.32	4%	0.00

	ProS	HB	GM	CED	BW	WW	YW	MILK	HPG	CEM	STAY
EPD	113	50	63	14	-3.1	71	123	30	13	6	16
TOP%	17%	52%	10%	29%	26%	16%	8%	18%	24%	81%	30%

**BIEBER CL ENERGIZE F121, SIRE**

An Energize son posting a 630 lb. WW to ratio 108. His Gold Mine dam is a solid member of the KFRA herd with 104 MPPA and a 357 day Calving Interval.





Lot 38

KFRA MR ENDURANCE L532

KFRA/L532 1A 100% AR BD: 2/15/23 RAAA#4846800 BULL

SCHULER NEBULA P707 0050X
SCHULER ENDURANCE 2101Z
SOR FIREFLY DYNATREND 0431X
SIRE / GILCHRIST HIGH ENDURANCE
BIEBER ROUGH RIDER 10712
BIEBER YOD 340X
OLC YOD R387
SODAK FINAL ANSWER Y544
SODAK FINAL ANSWER A504
SODAK DIMENSION Y035
DAM / KFRA MS FINAL ANSWER E25
35CC RIMGARD X334
KFRA RIMGARD AU66
KFRA DAKOTA MISS U66

	DATA	RATIO
BW	79	98
WW	672	115
YW	1242	111
SC	37	

	EPD	TOP%	DATA
REA	0.22	32%	13.2
MARB	0.39	57%	2.56
BFAT	0.01	42%	0.44
YG	0.07	54%	—
CW	35	13%	—
ADG	0.28	18%	0.00

	ProS	HB	GM	CED	BW	WW	YW	MILK	HPG	CEM	STAY
EPD	112	72	40	14	-0.6	79	123	23	10	9	17
TOP%	18%	14%	47%	39%	74%	4%	7%	73%	68%	22%	20%

These High Endurance sons always come with growth and performance -- L532 is no exception with a 672 lb. WW and a 115 WR. His Final Answer dam posts a 102 MPPA and a 367 day Calving Interval.



Lot 39

KFRA MR GRINDSTONE L349

KFRA/L349 1A 100% AR BD: 2/11/23 RAAA#4846732 BULL

LEACHMAN PLEDGE A282Z
HXC ALLEGIANCE 5502C
HXC 100Y
SIRE / HXC GRINDSTONE 9908G
SPUR FRANCHISE OF GARTON
HXC 605D
HXC 905W
BROWN PARAMOUNT X7879
LSF RAB PERFORMANCE 2772Z
BROWN MS REVELATION T7650
DAM / MS PERFORMANCE C97
JDB EQUALS THUNDER 302N
LAZYJ EQUITY 254-085
LAZYJ MS VOLUMINOUS 085-526

	DATA	RATIO
BW	80	99
WW	554	94
YW	1106	99
SC	41.5	

	EPD	TOP%	DATA
REA	0.41	8%	12.1
MARB	0.49	34%	3.43
BFAT	0.01	37%	0.25
YG	0.01	21%	—
CW	35	13%	—
ADG	0.29	12%	0.00

	ProS	HB	GM	CED	BW	WW	YW	MILK	HPG	CEM	STAY
EPD	107	57	50	10	-0.5	72	118	26	13	6	16
TOP%	24%	39%	26%	87%	76%	14%	12%	49%	27%	76%	38%

If you like bulls with BIG scrotal measurements, Big Dave brings this Grindstone son with a 41.5 cm.scrotal measurement. His dam is a consistent producer with a 365 day Calving Interval on 7 calves.



Lot 40

KFRA MR ENGERGIZE L550

KFRA/L550 1A 100% AR BD: 2/20/23 RAAA#4846868 BULL

ANDRAS FUSION R236
BIEBER CL ATOMIC C218
BIEBER DATELINE 308Y
SIRE / BIEBER CL ENERGIZE F121
BIEBER HARD DRIVE Y120
BIEBER CL ADELLE 575D
BIEBER ADELLE 297Y
FRITZ JUSTICE 8013
JEFFRIES CHECOTAH 817C
JEFFRIES MS LAKOTA Z11
DAM / KFRA MS CHECOTAH G91
VGW COLUMBIA 221
35CC RACHEL D471
BSKF RACHEL Y921

	DATA	RATIO
BW	82	101
WW	614	105
YW	1138	101
SC	37.5	

	EPD	TOP%	DATA
REA	0.16	45%	12.9
MARB	0.55	24%	3.22
BFAT	0.02	59%	0.33
YG	0.07	50%	—
CW	23	52%	—
ADG	0.27	21%	0.00

	ProS	HB	GM	CED	BW	WW	YW	MILK	HPG	CEM	STAY
EPD	91	44	47	15	-3.0	72	116	23	10	7	14
TOP%	49%	65%	32%	21%	29%	13%	15%	78%	66%	51%	66%

L550 is a top heifer bull prospect in this offering. Energize X Checotah pedigree offers new bloodlines to the Red Reckoning program.

**Lot
41****KDM2C RED LASER L232**

KDM2C/L232 1A 100% AR BD: 2/21/23 RAAA#4827902 BULL

MYTTY IN FOCUS
ANDRAS IN FOCUS B152
ANDRAS PINETA B91
SIRE / 35CC LASER FOCUSED C171
35CC DOMINOR W338
35CC HANNAH Z100
35CC MISS ET HANNAHHOBO P103
RED SOO LINE POWER EYE 161X
KJHT POWER TAKE OFF
SRA PAINTBUCKET
DAM / KDM2C ENBY H960
SCHULER ENVY 7342T
A272
DAMAR KENDRA Y095

	DATA	RATIO
BW	92	108
WW	726	109
YW	1113	102
SC	33	

	EPD	TOP%	DATA
REA	0.11	56%	14.1
MARB	0.55	24%	2.13
BFAT	0.04	89%	0.25
YG	0.17	93%	—
CW	34	15%	—
ADG	0.34	2%	0.00

	ProS	HB	GM	CED	BW	WW	YW	MILK	HPG	CEM	STAY
EPD	130	73	57	13	0.3	76	130	29	15	6	18
TOP%	5%	13%	16%	54%	86%	6%	4%	22%	5%	74%	10%

**Lot
41**

KDM2C Red Laser L232 bull that can fill the need for growth and performance in bulls, but also produce great females. L232 is following a long line of dam and grandam with bigger frames and lots of style. Laser Focused females, great udders. Several top end EPDs on this guy.

**Lot
42****KDM2C ALAMO L219**

KDM2C/L219 1A 100% AR BD: 2/15/23 RAAA#4827850 BULL

5L BOURNE 117-48A
5L ULTIMATUM 1893-03C
5L PRETTY GUN 1300-1893
SIRE / LASO ALAMO C92H
BROWN ALLIANCE X7795
LASO LANA A178C
LASO LANA T68A
5L ADVOCATE 817-14W
5L MTN SIGN 435-10Z
5L LAKOTA 1583-435
DAM / KDM2C WORTHY F757
BADLANDS NET WORTH 23U
R3B MISS WORTHY
SHHM MOON BEAM 44L

	DATA	RATIO
BW	81	95
WW	742	111
YW	1076	99
SC	36	

	EPD	TOP%	DATA
REA	0.19	38%	15.0
MARB	0.66	12%	4.91
BFAT	0.03	69%	0.35
YG	0.12	79%	—
CW	36	11%	—
ADG	0.28	17%	0.00

	ProS	HB	GM	CED	BW	WW	YW	MILK	HPG	CEM	STAY
EPD	119	60	59	17	-2.1	76	121	29	13	10	15
TOP%	11%	33%	14%	8%	45%	7%	10%	22%	28%	8%	49%



LASO ALAMO C92H, SIRE

KDM2C Alamo L219 from top producing mid moderate frame female. Alamo progeny have a great look to them. Calving ease bull that could still add lots of growth on calves. 107 MPPA 365 day interval on 4 calves. Balanced EPDs with over 10 in the top 20%

**Lot
43****KFRA MR QUARTERBACK L356**

KFRA/L356 1A 100% AR BD: 2/14/23 RAAA#4846908 BULL

PIE STOCKMAN 4051
PIE QUARTERBACK 789
PIE RUBY 520
SIRE / HRP QUARTERBACK 0150H
BECKTON NEBULA P P707
BROWN MS P707 X7580
C-BAR & BROWN ABIGRACE T714
PIE STOCKMAN 4051
BIEBER CL STOCKMARKET E119
BIEBER CL ADELLE 475C
DAM / KFRA H46 MS STOCKMARKET
RED COCKBURN RIBEYE 308U
KFRA MS RIBEYE E110
35CC KAREN W752

	DATA	RATIO
BW	85	105
WW	606	103
YW	1232	110
SC	39	

	EPD	TOP%	DATA
REA	0.13	51%	14.3
MARB	0.78	5%	3.30
BFAT	0.03	68%	0.29
YG	0.08	55%	—
CW	21	62%	—
ADG	0.29	13%	0.00

	ProS	HB	GM	CED	BW	WW	YW	MILK	HPG	CEM	STAY
EPD	115	58	56	14	-3.1	71	118	26	13	8	15
TOP%	15%	36%	17%	32%	26%	15%	13%	45%	27%	35%	46%



PIE QUARTERBACK 789, GRANDSIRE

What would you expect from a Quarterback X Stockmarket pedigree bull? How about a critter with a 606 lb. WW, 1232 lb. YW and top 5% MARB EPD. Check this bull out sale day — he would have been in the front 10 Lots in most sales in the country.


Lot
44

Lot
44

KFRA MR END ZONE L552

KFRA / L552 1A 100% AR BD: 2/21/23 RAAA#4846710 BULL

BIEBER ROLLIN DEEP Y118
BIEBER DEEP END B597
BIEBER LAURA 158W
SIRE / BROWN JRAR END ZONE H6629
BECKTON NEBULA P P707
BROWN MS P707 Y6648
BROWN MS JULIAN W6579
BECKTON NEBULA P P707
HXC BIG IRON 0024X
HXC 825U
DAM / KFRA MS. IRON B95
RED FINE LINE MULBERRY 26P
KFRA RED BERRY Y515
KFRA RED QUEEN 5154

	DATA	RATIO
BW	81	100
WW	522	89
YW	1085	97
SC	39.5	

	EPD	TOP%	DATA
REA	0.35	13%	14.7
MARB	0.58	20%	4.21
BFAT	0.02	44%	0.23
YG	0.04	32%	—
CW	35	14%	—
ADG	0.27	21%	0.00

	ProS	HB	GM	CED	BW	WW	YW	MILK	HPG	CEM	STAY
EPD	105	44	62	10	-0.6	66	110	23	13	6	15
TOP%	26%	66%	11%	81%	74%	31%	25%	77%	19%	76%	44%

This End Zone son comes from a consistent producing Big Iron cow with a 365 day Calving Interval on 8 natural calves.

DVAuction

Broadcasting Real-Time Auctions

Can't make the sale?

Let DVAuction bring the sale to you!

Busy during the sale?

Let DVAuction represent your bid!

Visit www.DVAuction.com and register today.

For general questions please contact our office:
402-316-5460 or support@dvauction.com

Lot
45

GILCHRIST RED RESOLUTION

STRG / 226K 1A 100% AR BD: 9/15/22 RAAA#4742707 BULL

BCC BOLD 16B
RED BCC GATOR 18E
BCC BLACK MARTA 39C
SIRE / RED BCC BRYLOR OTM RESOLUTION
RED TER-RON HOT SHOT 10B
RED BCC RENEE 44F
RED BCC RENEE 60T
5L GUNS BLAZIN 637-5874
5L GUNFIRE 1173-6966
5L SILKWOOD 9161-1173
DAM / RED MCRAE'S REBA 49W
RED FLYING K PRINCE 171M
RED MCRAE'S REBA 66P
RED MCRAE'S REBA 25J

	DATA	RATIO
BW	78	
WW	563	
YW	1042	
SC	40	

	EPD	TOP%	DATA
REA	0.11	56%	12.04
MARB	0.26	86%	1.85
BFAT	0.02	51%	0.17
YG	0.05	42%	—
CW	19	70%	—
ADG	0.20	69%	2.99

	ProS	HB	GM	CED	BW	WW	YW	MILK	HPG	CEM	STAY
EPD	92	77	14	11	0.6	66	99	26	11	8	18
TOP%	47%	9%	92%	71%	90%	30%	49%	53%	54%	28%	16%

An ET brother to Lot 29 with more calving ease. He is an outcross bull with the age advantage of an 18 month old.



**Lot
46****KFRA MR ENERGIZE L526**

KFRA/L526 1A 100% AR BD: 2/12/23 RAAA#4846754 BULL

ANDRAS FUSION R236
BIEBER CL ATOMIC C218
BIEBER DATELINE 308Y
SIRE / BIEBER CL ENERGIZE F121
BIEBER HARD DRIVE Y120
BIEBER CL ADELLE 575D
BIEBER ADELLE 297Y
ANDRAS IN FOCUS B152
ANDRAS NEW DIRECTION R240
ANDRAS KURUBA B111
DAM / PFFR RED LASS 609
PFFR LOCKED AND LOADED 918
5HSR RED LASS 402
AEE RED CAP LASS 7130

	DATA	RATIO
BW	81	100
WW	662	113
YW	1111	99
SC	37	

	EPD	TOP%	DATA
REA	0.24	29%	13.4
MARB	0.46	40%	3.13
BFAT	0.02	55%	0.30
YG	0.07	49%	—
CW	30	25%	—
ADG	0.28	15%	0.00



	ProS	HB	GM	CED	BW	WW	YW	MILK	HPG	CEM	STAY
EPD	103	53	51	14	-2.5	69	115	30	15	5	14
TOP%	29%	47%	25%	32%	38%	20%	17%	15%	6%	85%	55%

L526 is a top heifer bull prospect with a 662 lb. WW and 113 WR. Hid dam is one of the top New Direction females in the herd touting a 105 MPPA and a 367 day Calving Interval.

**Lot
47****KFRA MR GRINDSTONE L328**

KFRA/L328 1A 100% AR BD: 2/7/23 RAAA#4846858 BULL

LEACHMAN PLEDGE A282Z
HXC ALLEGIANCE 5502C
HXC 100Y
SIRE / HXC GRINDSTONE 9908G
SPUR FRANCHISE OF GARTON
HXC 605D
HXC 905W
LEACHMAN PLEDGE A282Z
HXC ALLEGIANCE 5502C
HXC 100Y
DAM / KFRA MS ALLEGIANCE G30
OHRD DAKOTA COPPER 29K
KFRA DAKOTA MISS U66
KFRA MISS LANCER 6631

	DATA	RATIO
BW	83	103
WW	584	100
YW	1108	99
SC	40	

	EPD	TOP%	DATA
REA	0.42	7%	13.1
MARB	0.52	29%	4.54
BFAT	0.01	37%	0.25
YG	0.00	17%	—
CW	33	17%	—
ADG	0.27	21%	0.00



	ProS	HB	GM	CED	BW	WW	YW	MILK	HPG	CEM	STAY
EPD	106	54	52	10	-1.3	68	111	30	12	5	16
TOP%	25%	45%	22%	84%	61%	26%	22%	15%	36%	89%	27%

You will like the Grindstone genetics in this offering including this son from a top HXC Allegiance daughter that posts a 104 MPPA in a 362 day Calving Interval. Don't miss his 40 cm. scrotal measurement – fertility at its finest.

**Lot
48****KFRA MR ALAMO L522**

KFRA/L522 1A 100% AR BD: 2/12/23 RAAA#4846720 BULL

5L BOURNE 117-48A
5L ULTIMATUM 1893-03C
5L PRETTY GUN 1300-1893
SIRE / LASO ALAMO C92H
BROWN ALLIANCE X7795
LASO LANA A178C
LASO LANA T68A
RED FINE LINE MULBERRY 26P
JACOBSON MULBERRY 3077
GLACIER FRITZ 501 ET
DAM / 3SCC POLLY C614
BECKTON EPIC R397 K
3SCC POLLY Y632
BSKF POLLY S236

	DATA	RATIO
BW	81	100
WW	619	106
YW	1140	102
SC	37	

	EPD	TOP%	DATA
REA	0.17	43%	12.5
MARB	0.53	27%	3.51
BFAT	0.04	83%	0.38
YG	0.13	83%	—
CW	32	20%	—
ADG	0.28	16%	0.00



	ProS	HB	GM	CED	BW	WW	YW	MILK	HPG	CEM	STAY
EPD	105	59	45	14	0.2	76	121	24	14	8	15
TOP%	27%	34%	35%	27%	86%	7%	9%	64%	13%	26%	46%

These Alamo sons have certainly not disappointed our group and this bull will not disappoint you when you see him in the bullpen. His dam comes from the highly maternal Mulberry bloodline and offers a 365 Calving Interval on 7 natural calves.



BIEBER CL ATOMIC C218, SIRE

**Lot
49**
KFRA MR ATOMIC L331

KFRA / L331 1A 100% AR BD: 2/7/23 RAAA#4846936 BULL

ANDRAS IN FOCUS B175
ANDRAS FUSION R236
ANDRAS BELLE B167
SIRE / BIEBER CL ATOMIC C218
HUST CHIEF SEQUOYA R336
BIEBER DATELINE 308Y
BASIN ROSE 7127
C-T RED QUEST 4010
OVER DRAFT PICK 413D
OVER BLUSH 413B
DAM / KFRA MS DRAFT PICKEX J4
3SCC ZEUS Y124
KFRA MS. ZEUS B55
KFRA MS RIGHT ZP24

	DATA	RATIO
BW	87	108
WW	619	106
YW	1156	103
SC	40	

	EPD	TOP%	DATA
REA	0.05	69%	11.7
MARB	0.57	21%	2.73
BFAT	0.02	53%	0.34
YG	0.13	82%	—
CW	31	22%	—
ADG	0.31	7%	0.00

	ProS	HB	GM	CED	BW	WW	YW	MILK	HPG	CEM	STAY
EPD	106	54	54	14	-2.9	72	121	32	12	10	15
TOP%	25%	49%	20%	27%	31%	13%	9%	8%	43%	8%	53%

L331 is the grand finale to an excellent set of bulls and would be an excellent choice if you need a bull to breed heifers. He offers a highly fertile 40 cm. scrotal measurement and comes from a first calf heifer.

DVAuction

Broadcasting Real-Time Auctions

Can't make the sale?

Let DVAuction bring the sale to you!

Busy during the sale?

Let DVAuction represent your bid!

Visit www.DVAuction.com and register today.

For general questions please contact our office:
402-316-5460 or support@dvauction.com

**Lot
50**
KFRA MR ATOMIC L331

KFRA / L347 1B 87.5% AR BD: 2/10/23 RAAA#4846946 BULL

PIE STOCKMAN 4051
BIEBER CL STOCKMARKET E119
BIEBER CL ADELLE 475C
SIRE / BIEBER BLUE CHIP H302
BIEBER IRON ORE A104
BIEBER ROSE 162C
BIEBER ROSE 475A
PIE THE COWBOY KIND 343
PIE JUST RIGHT 540
RAISLAND LAKOTA 311-158
DAM / KFRA MS JUST RIGHT J78
NON-REGISTERED SIRE
MS MERLIN D121
NON-REGISTERED SIRE

	DATA	RATIO
BW	81	100
WW	598	102
YW		
SC		

	EPD	TOP%	DATA
REA	0.29	20%	13.3
MARB	0.73	7%	3.02
BFAT	0.03	77%	0.31
YG	0.06	47%	—
CW	27	39%	—
ADG	0.26	28%	—

	ProS	HB	GM	CED	BW	WW	YW	MILK	HPG	CEM	STAY
EPD	134	73	61	16	-4.0	69	111	25	9	10	16
TOP%	4%	14%	11%	13%	15%	21%	23%	59%	88%	5%	31%

On February 21st, when the truckload of spring born bulls arrived from the Bull Development Pen in Minnesota, we were surprised to have one extra bull. Well, this is him and somehow (and unexpectedly) he made his way on board. For all you commercial cattlemen, don't tune out before the end, he is a very top-end prospect but will not be on any seedstock producers list because of his 1B 87.5% status. This is the grand finale of the bull offering.

Commercial Red Angus Females

- 100-135** 35 Spring Bred Females due in April/May Dave Stolsfus / Horseshoe Valley Farm, Fennimore, Wisconsin
- 136-151** 16 Spring Bred Females due in September Dave Stolsfus / Horseshoe Valley Farm, Fennimore, Wisconsin
- 152-168** 17 Bred Heifers--Bred to RAAA# 4475089 & 4475083 Marvin Curry, Dublin, Texas -- selling F.O.B Dublin, TX
- 169-178** 10 Short Bred Heifers (bull in 2/05/24) Marvin Curry, Dublin, Texas -- selling F.O.B Dublin, TX
- 179-184** 6 Open Heifers Hanson Red Angus, Edgerton, Minnesota
- 185-199** 15 Open Heifers Randy Gates, Douds, Iowa

Elite Genetic Offerings

**Lot
400**

SELLING 4 EMBRYOS

ANDRAS IN FOCUS B175
ANDRAS FUSION R236
ANDRAS BELLE B167
SIRE / DAMAR MIMI E381
RED FINE LINE MULBERRY 26P
DAMAR MIMI W085
DFRA TARMILY N512

PFFR SHAQ 607
BADLANDS NET WORTH 23U
BADLANDS MEDORA 406
DAM / HARMONYS WINDSONG 111
RED FINE LINE MULBERRY 26P
HARMONYS WINDSONG U28E
BJR WINDSONG 2269

Projected Mating EPDs:

	ProS	HB	GM	CED	BW	WW	YW	MILK	HPG	CEM	STAY
EPD	103	69	34	9	1.4	68	110	23	13	8	17

We purchased the Windsong cow in the 2013 MO Show-Me-Reds Auction at \$14,000 and made her one of our top Donors the following years. She was a highly fertile and large framed cow with a super udder. Damar Mimi is a past National Champion Bull adding extra style but with a lot of performance. Selling 4 embryos with the guarantee of 1 pregnancy if implanted by a Certified ET Tech.



DAMAR MIMI E381, SIRE

**Lot
401**

SELLING 3 EMBRYOS

S A V RESOURCE 1441
MRLA RELOAD 56C
RED MRLA MISS 641Y
SIRE / RED MRLA RESOURCE 137E
S A V HARVESTOR 0338
MRLA MISS 4422B
MRLA MISS 433T

PIESTOCKMAN 4051
BIEBER CL STOCKMARKET E119
BIEBER CL ADELLE 475C
DAM / KFRA H34 MS STOCKMARKET
HXC BIG IRON 0024X
MS BIG IRON C23
KFRA MS. NICE Y923

Projected Mating EPDs:

	ProS	HB	GM	CED	BW	WW	YW	MILK	HPG	CEM	STAY
EPD	116	50	65	12	-9	66	118	23	15	9	12

Check out this pedigree combination of a top Stockmarket daughter mated to Resource. Her first calf sold to Swank Farms (a Night Focus son) and is one of the main herd bulls in their Pennsylvania Red Angus program. If you like power and substance, these embryos are for you! Selling 3 embryos with the guarantee of 1 pregnancy if implanted by a Certified ET Tech.



RED MRLA RESOURCE 137E, SIRE

**Lot
402**

SELLING 3 OR 6 EMBRYOS

COLT 45/7
MAGNUM 357
MCTYRE 60/7
SIRE / CIRCLE A MASTERPIECE
RED HOT 4010
MISS GRANDVIEW 21
CIRCLE A ISADORA 96

PFFR SHAQ 607
BADLANDS NET WORTH 23U
BADLANDS MEDORA 406
DAM / HARMONYS WINDSONG 111
RED FINE LINE MULBERRY 26P
HARMONYS WINDSONG U28E
BJR WINDSONG 2269

Projected Mating EPDs:

	ProS	HB	GM	CED	BW	WW	YW	MILK	HPG	CEM	STAY
EPD	29	49	-20	10	.8	66	98	21	12	8	10

We produced these embryos when we were a part of the Red Alliance Auctions in Oklahoma and Texas. Recently we sold daughters in the Mississippi Fall Classic Sale where they were very well accepted. Masterpiece is a Santa Gertrudis bull and these F1 Red Angus embryos will produce excellent progeny for the southern climates – get on DVAuction and buy these! Selling 3 or 6 embryos with the guarantee of 1 embryo for each pkg of 3 if implanted by a Certified ET Tech.



HARMONYS WINDSONG 111, DAM OF LOTS 400 & 403


Lot
403

PIE GET R DONE 684

PIE/684 1A 100% AR BD: 2/1/06 RAAA#1137479 BULL

SIRE / PIE CHICAWA 366

DAM / PIE RED RUBY 4094

	ProS	HB	GM	CED	BW	WW	YW	MILK	HPG	CEM	STAY
EPD	102	83	19	10	0.2	71	102	15	17	6	17
TOP%	32	8	77	77	80	23	48	98	4	68	28

	MARB	YG	CW	REA	FAT
EPD	0.23	-0.04	31	0.33	-0.01
TOP%	83	11	30	20	8

This bull set in motion the popularity and demand for the Pieper program. He was born in 2006 and sold in 2007 for \$80,000. If you want genetics from the base of the Pieper operation, get this semen bought! **Offering 27 straws of semen.**

Lot
404

GILCHRIST IRON HORSE 972W

STRG/972W 1A 100% AR BD: 12/28/09 RAAA#1367054 BULL

SIRE / T.W.MAJOR LEAGUE

DAM / HW DINA 3536

	ProS	HB	GM	CED	BW	WW	YW	MILK	HPG	CEM	STAY
EPD	74	57	17	13	-1.4	75	114	18	10	7	14
TOP%	67	39	80	52	57	15	26	94	70	47	59

	MARB	YG	CW	REA	FAT
EPD	0.33	0.06	14	0.07	0.02
TOP%	66	43	78	60	55

Iron Horse was a bigger framed, long bodied grandson of the \$16,000 HW Dina 3526 cow from the Whitley program of Alabama. With Major League X Goldrobber in his pedigree, go back in time and use some of the Leachman genetics that made the Red Angus breed what it is today! **Offering 10 straws of semen – the last 10 in existence in the world!**

Lot
405

JCBB TRAILHEAD 347A

JCBB/347A 1A 100% AR BD: 11/9/13 RAAA#1660640 BULL

SIRE / BIEBER OUTRIDER W388

DAM / TABASCO 118

	ProS	HB	GM	CED	BW	WW	YW	MILK	HPG	CEM	STAY
EPD	124	81	43	12	-0.6	65	101	22	12	5	18
TOP%	12	10	40	64	70	41	50	78	40	85	17

	MARB	YG	CW	REA	FAT
EPD	0.68	-0.05	4	0.21	0.01
TOP%	13	10	94	35	38

We used this Bieber Outrider son on volumes of commercial Red Angus heifers with great success. Trailhead also produced some very fine registered daughters in his day. **Offering 23 straws of semen.**

Lot
406

BASIN HOB0 79E

DES/79E 1A 100% AR BD: 3/15/95 RAAA#492175 BULL

SIRE / BUF CRK HOB0 2595

DAM / DOUBLE FORK 079Z

	ProS	HB	GM	CED	BW	WW	YW	MILK	HPG	CEM	STAY
EPD	115	87	28	17	-6.0	47	71	35	3	9	22
TOP%	18	6	63	12	3	92	93	4	99	16	1

	MARB	YG	CW	REA	FAT
EPD	0.50	0.17	9	-0.21	0.04
TOP%	35	86	88	95	82

This semen is subject to previous seller's approval. When I bought it, I was to only use it in the Star G Ranch ET program. Hobo 79E is the "Absolute King" at making exceptional daughters that inevitably crank out national Stud Bulls. **Offering 15 straws of semen.**

Lot
407

LORENZEN GLADIATOR E800

VFRA/E800 1A 100% AR BD: 3/9/17 RAAA#3788171 BULL

SIRE / BIEBER GLADIATOR C386

DAM / LARSON FLO-MARIE 245-369

	ProS	HB	GM	CED	BW	WW	YW	MILK	HPG	CEM	STAY
EPD	89	26	63	12	1.0	77	129	32	16	5	9
TOP%	48	84	15	64	89	12	9	10	7	78	93

	MARB	YG	CW	REA	FAT
EPD	0.75	0.11	31	-0.02	0.00
TOP%	9	65	29	76	23

One of the heaviest muscled Red Angus bulls I have ever witnessed in the Red Angus breed. Used in both the Star G Ranch & Kemen programs, he has sired some of the heaviest weaning calves in both programs. **Offering 8 units of semen.**


**Lot
408**

3J ONE OF A KIND A228

3JF/A228 1A 100% AR BD: 11/4/13 RAAA#1683296 BULL

SIRE / BUF CRK THE RIGHT KIND U199

DAM / BADLANDS CEDAR 922

	ProS	HB	GM	CED	BW	WW	YW	MILK	HPG	CEM	STAY
EPD	90	45	45	13	-1.5	65	109	31	12	5	15
TOP%	47	60	36	43	55	42	35	14	42	81	52

	MARB	YG	CW	REA	FAT
EPD	0.52	0.24	21	-0.41	0.02
TOP%	32	96	61	99	55

One of a Kind was the \$19,000 bull from the 2013 Red Alliance Auction in Oklahoma. He adds style, frame stature and body length into his progeny. We have used him successfully on both cows and heifers. Side note: his dam was the \$40,000 Cedar cow in the 2001 ND Red Select Auction! **Offering 80 straws of semen.**

**Lot
409**

WW DYNA POWER 3123

WW/3123 1A 100% AR BD: 1/23/13 RAAA#1609278 BULL

SIRE / A-1 ENVY 524W

DAM / PRINCES BEEF DYNA 01082

	ProS	HB	GM	CED	BW	WW	YW	MILK	HPG	CEM	STAY
EPD	50	38	12	13	-3.9	50	81	28	7	9	15
TOP%	88	70	86	44	17	87	83	36	95	16	42

	MARB	YG	CW	REA	FAT
EPD	0.31	0.09	14	0.01	0.03
TOP%	70	55	79	71	63

Dyna Power was another Red Alliance purchase and added tremendous length of body, frame stature and maternal traits into the Star G Ranch program. His contributions will be felt well into the future. **Offering 59 straws of semen.**

**Lot
410**

JDB EQUALS THUNDER 302N

DKB/302N 1A 100% AR BD: 1/10/03 RAAA#890720 BULL

SIRE / LCHMN NO EQUAL 1174D

DAM / DIG MATTIE 622A

	ProS	HB	GM	CED	BW	WW	YW	MILK	HPG	CEM	STAY
EPD	87	96	-8	16	-3.4	58	86	24	14	11	20
TOP%	50	3	98	18	24	65	77	65	17	5	6

	MARB	YG	CW	REA	FAT
EPD	0.30	0.15	3	-0.43	0.01
TOP%	71	80	95	99	36

Here is a big time bull that came out of the 2003 Bet On Red Auction in Reno, Nevada. He froze over 300 units of semen at 9 1/2 months old and was used naturally in the Star G Ranch Fall program before he was a year old! Highly fertile and exceptional at producing incredible females (he ranks in the top 3% for HB) – these are the last units known on the planet! **Offering 4 straws of semen.**

**Lot
411**

UBAR HIGH CAPACITY 224

UBAR/224 1A 100% AR BD: 3/15/02 RAAA#864114 BULL

SIRE / BJR HIGH CAPACITY 008

DAM / BJR BONNEBELL 7G

	ProS	HB	GM	CED	BW	WW	YW	MILK	HPG	CEM	STAY
EPD	24	17	8	8	2.0	77	126	21	19	4	9
TOP%	97	90	90	92	95	11	12	84	2	92	94

	MARB	YG	CW	REA	FAT
EPD	0.06	0.02	30	0.28	0.01
TOP%	97	27	33	25	33

Here we go with a \$51,000 bull selling as a six-year-old! (and back when Jackrabbit Johnny was drinking Gatorade). This bull has produced more show winners and sale toppers than probably any other Red Angus bull in the industry – and he would celebrate his 22nd birthday on March 15, 2024! **Offering 9 units of semen.**





DAM / DAMAR MIMI W085

[28]

Red Angus Guide to EPDS and Indexes

ProS... Profitability and Sustainability is an all-purpose index that predicts average economic differences in all segments in the beef supply chain. This index is a combination of the breeding objectives modeled in the HerdBuilder and GridMaster selection indexes. In this index, replacement heifers are retained from within the herd and all remaining progeny are fed out to slaughter and sold on a quality-based grid. Traits included in this index include calving ease, growth, HPG, STAY, Mature Weight, Dry Matter Intake and carcass traits. The resulting index is expressed in dollars per head born (Index/High Value).

HB HerdBuilder is a maternal selection index that predicts the economic differences of animals for traits that are important from conception through weaning. Expressed as dollars per head born, HB is calculated based on the scenario that bulls are mated to heifers and cows, replacement heifers are retained and all remaining progeny are marketed at weaning. Traits included in the HB index include Calving Ease Direct, Calving Ease Maternal, Weaning Weight, Milk, Mature Weight, Heifer Pregnancy and Stayability (Index/High Value).

GM..... GridMaster is a selection index that predicts the average economic difference of non-replacement calves through the post-weaning phase of production. GM places selection pressure on growth, feedyard performance and carcass traits. Expressed as dollars per head born, GM is calculated based on the scenario that progeny are fed out to slaughter and marketed on a quality-based carcass grid. Traits included in GM include Average Daily Gain, Carcass Weight, Dry Matter Intake, Marbling, Back Fat and Rib Eye Area (Index/High Value).

CED Calving Ease Direct predicts differences in the percent of calves born unassisted out of 2-year-old dams. (Percent/High Value)

BW Birth Weight predicts differences in actual birth weight of progeny. (Pounds/Low Value)

WW Weaning Weight predicts differences in 205-day weaning weight. (Pounds/High Value)

YW Yearling Weight predicts differences in 365-day yearling weight. (Pounds/High Value)

ADG Average Daily Gain predicts differences in weight gain between 205 and 365 days of age. (Pounds/High Value)

DMI Dry Matter Intake predicts differences in daily feed intake as measured in a feedlot during the post-weaning period. (Pounds/Low Value)

MILK Milk predicts differences in weaning weight attributed to the milking ability of the animal's daughters. (Pounds/High Value)

ME Maintenance Energy predicts the difference in maintenance energy requirements. (Mcal per Month/Low Value)

HPG Heifer Pregnancy predicts differences in the percent of daughters who are able to conceive and calve at 2 years of age following exposure to breeding. (Percent/High Value)

CEM Calving Ease Maternal predicts differences in the percent of daughters who are able to calve unassisted as 2-year-old heifers. (Percent/High Value)

STAY Stayability predicts differences in the ability of an animals' retained daughters to remain productive in the herd – calve every year – through 6 years of age. (Percent/High Value)

MARB Marbling predicts differences in marbling score – amount of intramuscular fat measured at the 13th rib. (Marbling Score Units/High Value)

YG Yield Grade predicts differences in USDA Yield Grade, which is calculated using CW, REA and Fat. (Yield Grade Units/Low Value)

CW Carcass Weight predicts differences in actual hot carcass weight. (Pounds/High Value)

REA Ribeye Area predicts differences in square inches of ribeye area measured at the 13th rib. (Square Inches/High Value)

FAT Fat predicts differences in the depth of backfat measured between the 12th and 13th ribs. (Inches/Low Value)

RED ANGUS

RANCH TESTED. RANCHER TRUSTED.

RedAngus.org



We invite you to the Gilchrist / Star G Ranch Auction Barn • Douds, IA

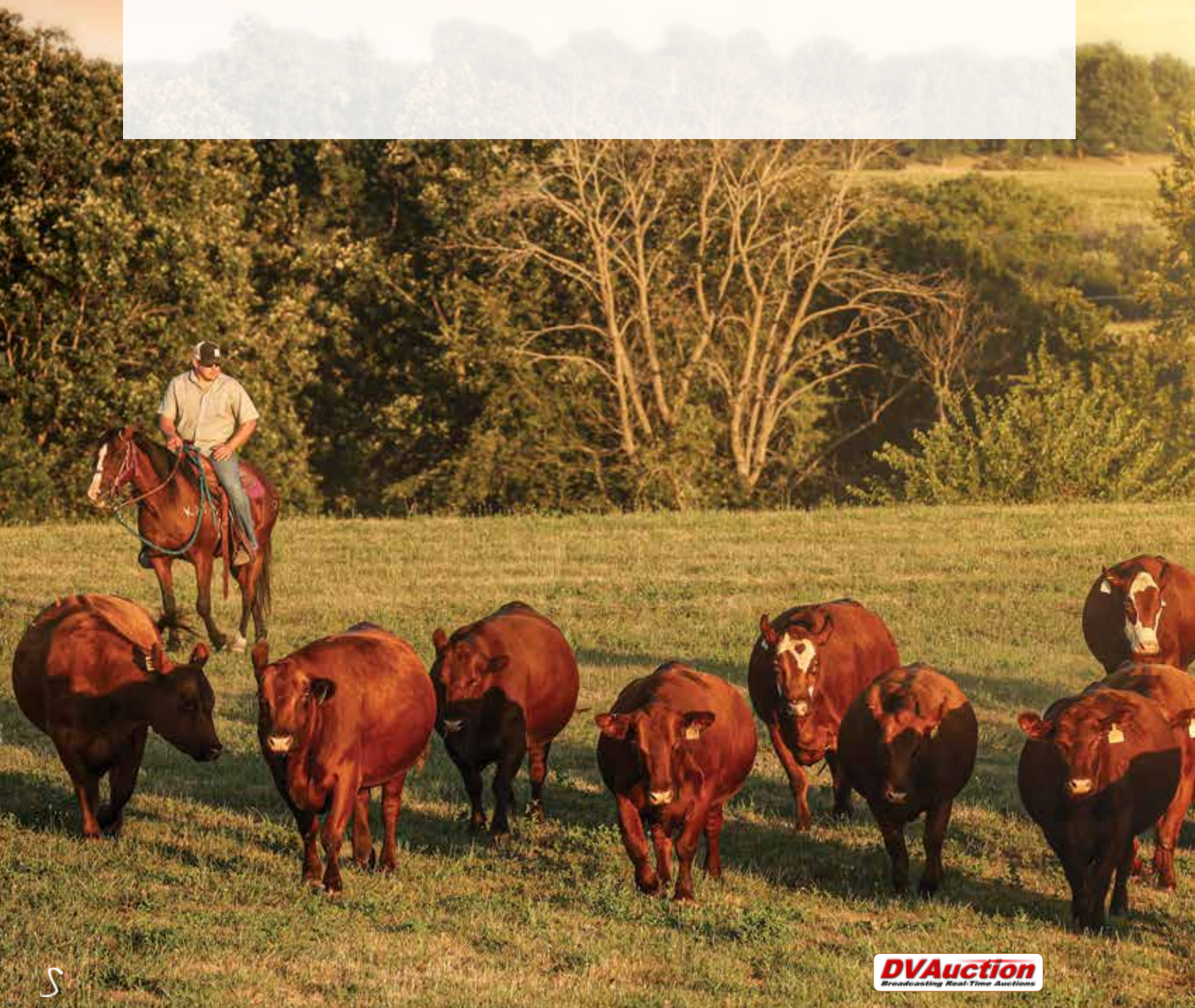
Lunch at 12:00 – Auction at 1:00 p.m.



**Star G Ranch, Inc.
14075 120th St.
Douds, IA 52551**

Presorted
First Class
US Postage
PAID
SlateGroup

**TIME DATED MATERIAL.
PLEASE DO NOT DELAY.**



DVAuction
Broadcasting Real-Time Auctions

SATURDAY, MARCH 16, 2024 • DOUDS, IA